

RMBS Performance Watch

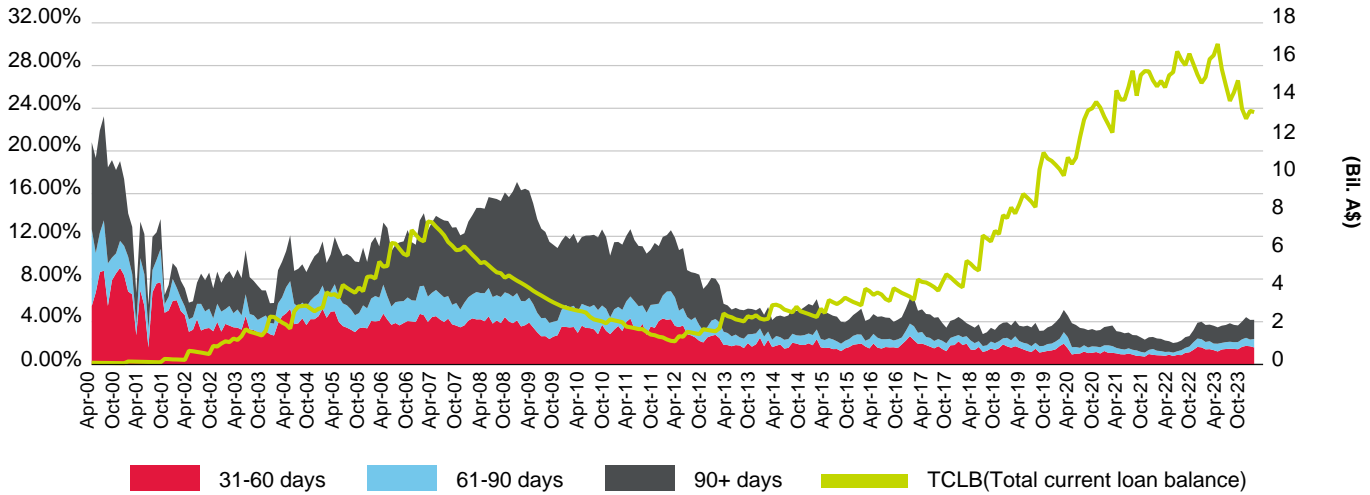
Australia Part 4 – Non-conforming Arrears & Prepayment Statistics

As of March 31, 2024

This report does not constitute a rating action.

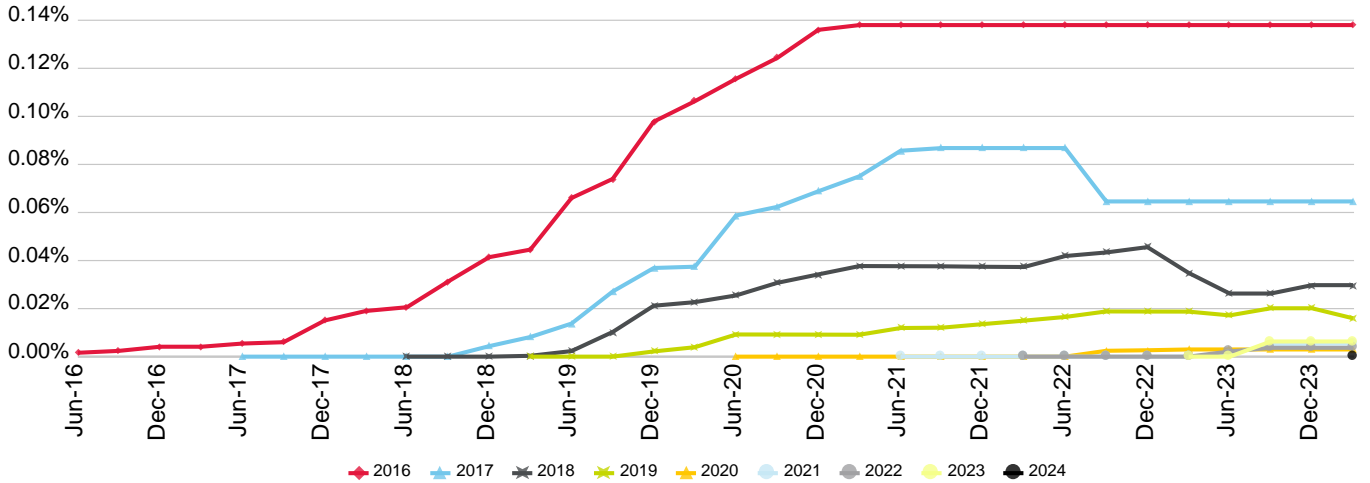
Arrears Statistics - Non-Conforming

Australia Non-Conforming S&P Global Ratings Mortgage Performance Index (SPIN)



(%)	Apr-23	May-23	Jun-23	Jul-23	Aug-23	Sep-23	Oct-23	Nov-23	Dec-23	Jan-24	Feb-24	Mar-24
31-60 days	1.43	1.34	1.21	1.40	1.44	1.47	1.45	1.42	1.65	1.74	1.70	1.59
61-90 days	0.74	0.62	0.73	0.62	0.65	0.65	0.63	0.68	0.71	0.75	0.63	0.79
90+ days	1.56	1.67	1.53	1.61	1.61	1.73	1.62	1.56	1.66	1.93	1.84	1.80
Non-Conforming SPIN	3.73	3.63	3.47	3.63	3.70	3.86	3.70	3.65	4.02	4.43	4.17	4.18
TCLB (Bil. A\$)	16.08	16.29	16.89	15.58	14.71	13.89	14.34	14.97	13.47	12.95	13.36	13.30

Cumulative Gross Losses As Percentage Of Total Initial Issuance By Year Of Issuance

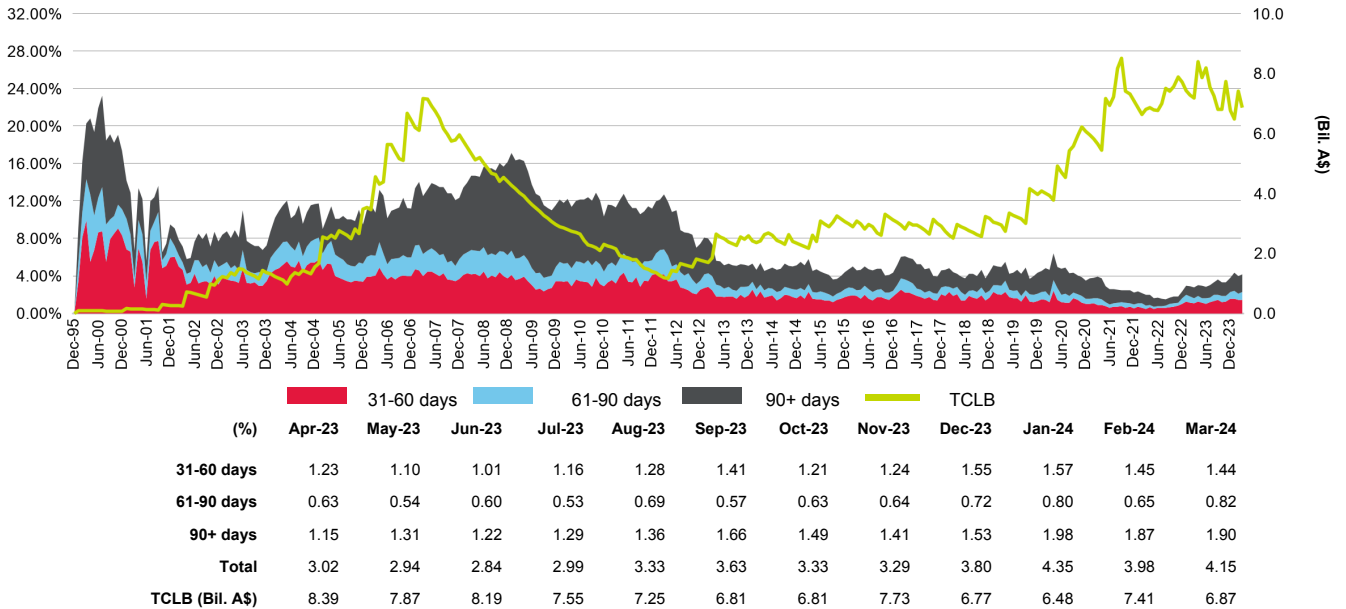


(%)	Jun-21	Sep-21	Dec-21	Mar-22	Jun-22	Sep-22	Dec-22	Mar-23	Jun-23	Sep-23	Dec-23	Mar-24
2024	0.000	0.000	0.000	0.000	0.000	0.000	0.000	0.000	0.000	0.000	0.000	0.000
2023	0.000	0.000	0.000	0.000	0.000	0.000	0.000	0.000	0.000	0.006	0.006	0.006
2022	0.000	0.000	0.000	0.000	0.000	0.000	0.000	0.000	0.002	0.004	0.004	0.004
2021	0.000	0.000	0.000	0.000	0.000	0.000	0.000	0.000	0.001	0.005	0.005	0.005
2020	0.000	0.000	0.000	0.000	0.000	0.002	0.003	0.003	0.003	0.003	0.003	0.003
2019	0.012	0.012	0.014	0.015	0.017	0.019	0.019	0.019	0.017	0.020	0.020	0.016
2018	0.038	0.038	0.037	0.037	0.042	0.043	0.046	0.035	0.026	0.026	0.030	0.030
2017	0.086	0.087	0.087	0.087	0.087	0.065	0.065	0.065	0.065	0.065	0.065	0.065
2016	0.138	0.138	0.138	0.138	0.138	0.138	0.138	0.138	0.138	0.138	0.138	0.138

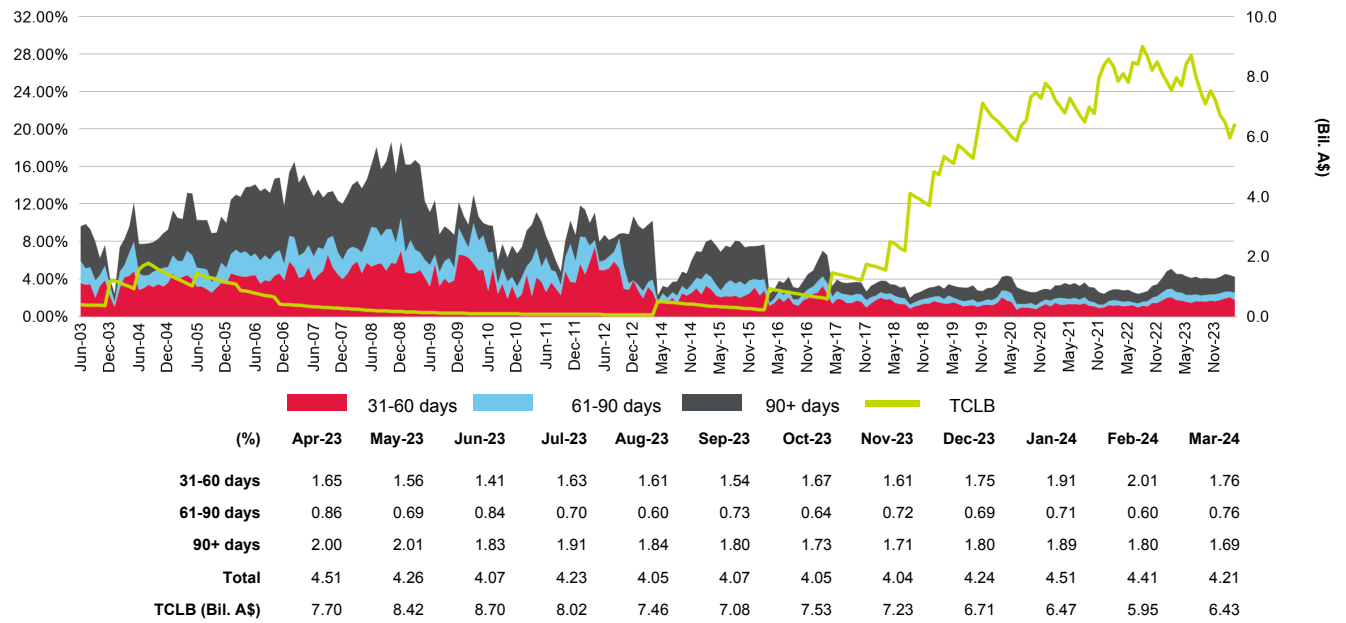
Copyright © 2024 Standard & Poor's Financial Services LLC. All rights reserved. Reproduction in whole or in part prohibited except by permission. RMBS Performance Watch is subject to the full disclaimer on Page iii, Part 1.

Arrears Statistics - Non-Conforming

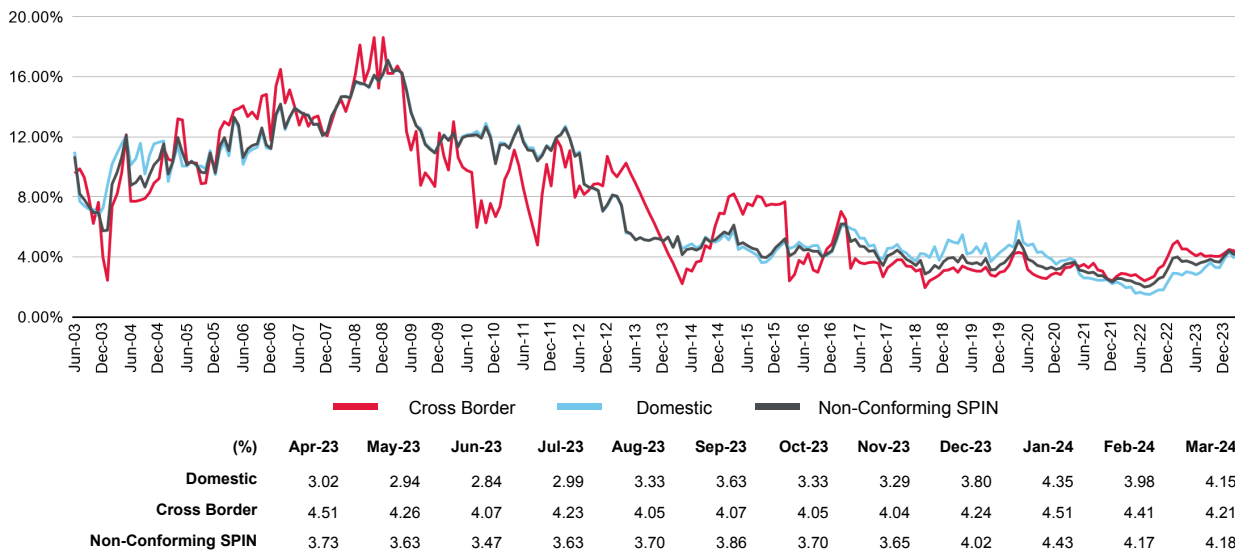
Arrears Domestic Issues



Arrears Cross Border Issues

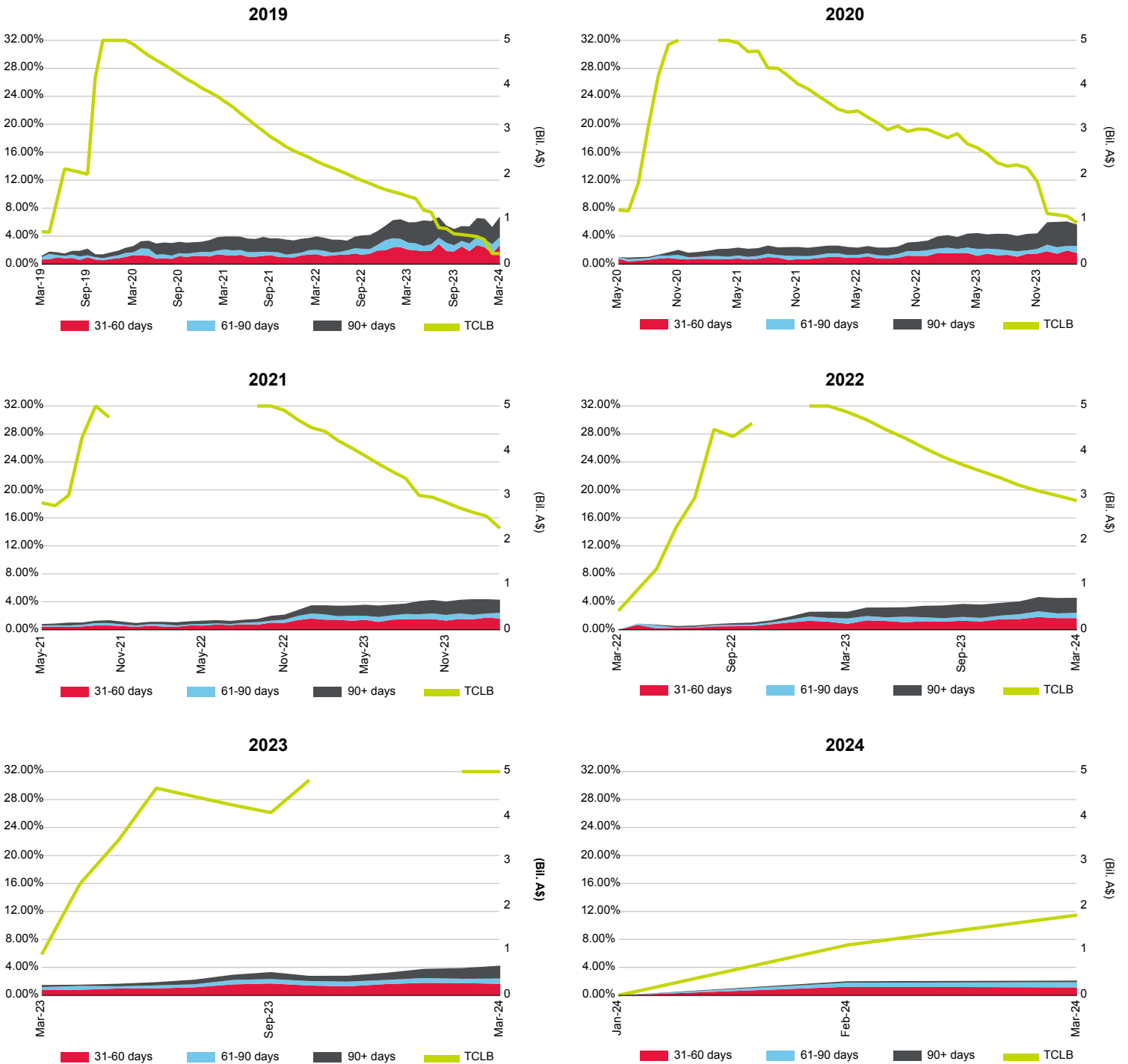


Market Comparison



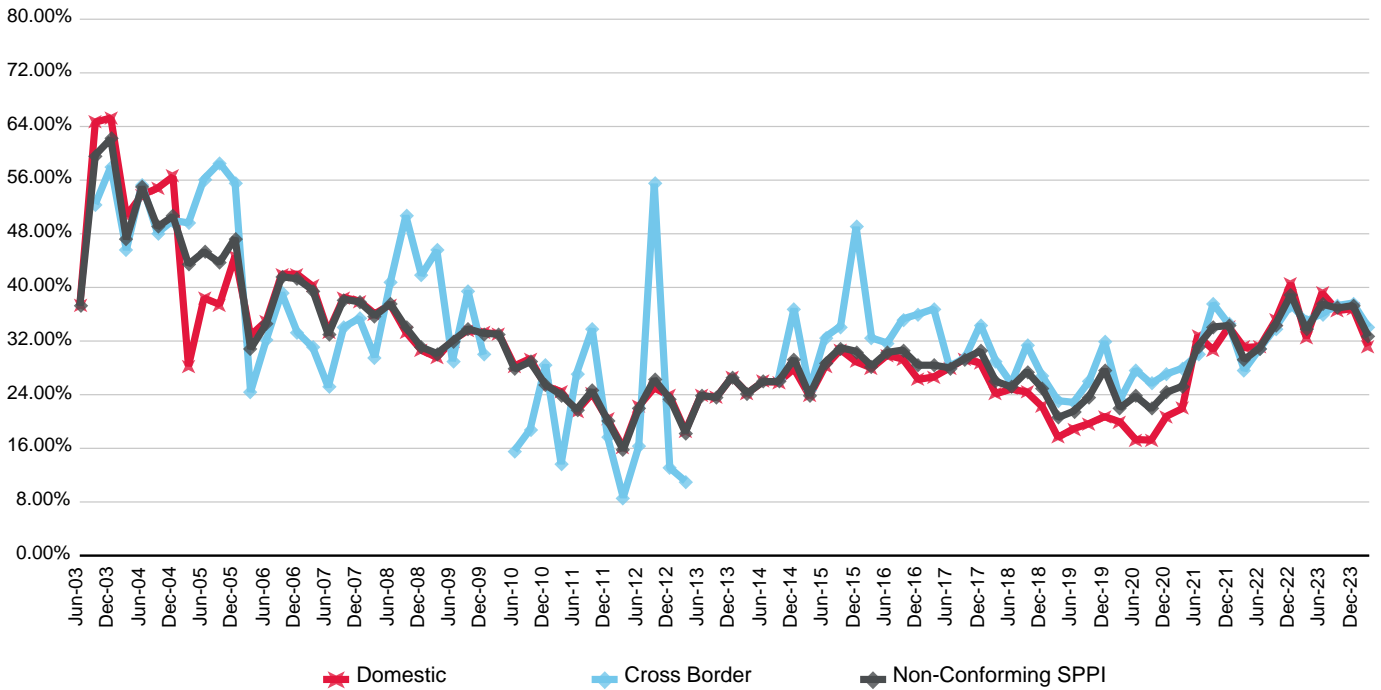
Arrears Statistics - Non-Conforming

By Year Of Issuance



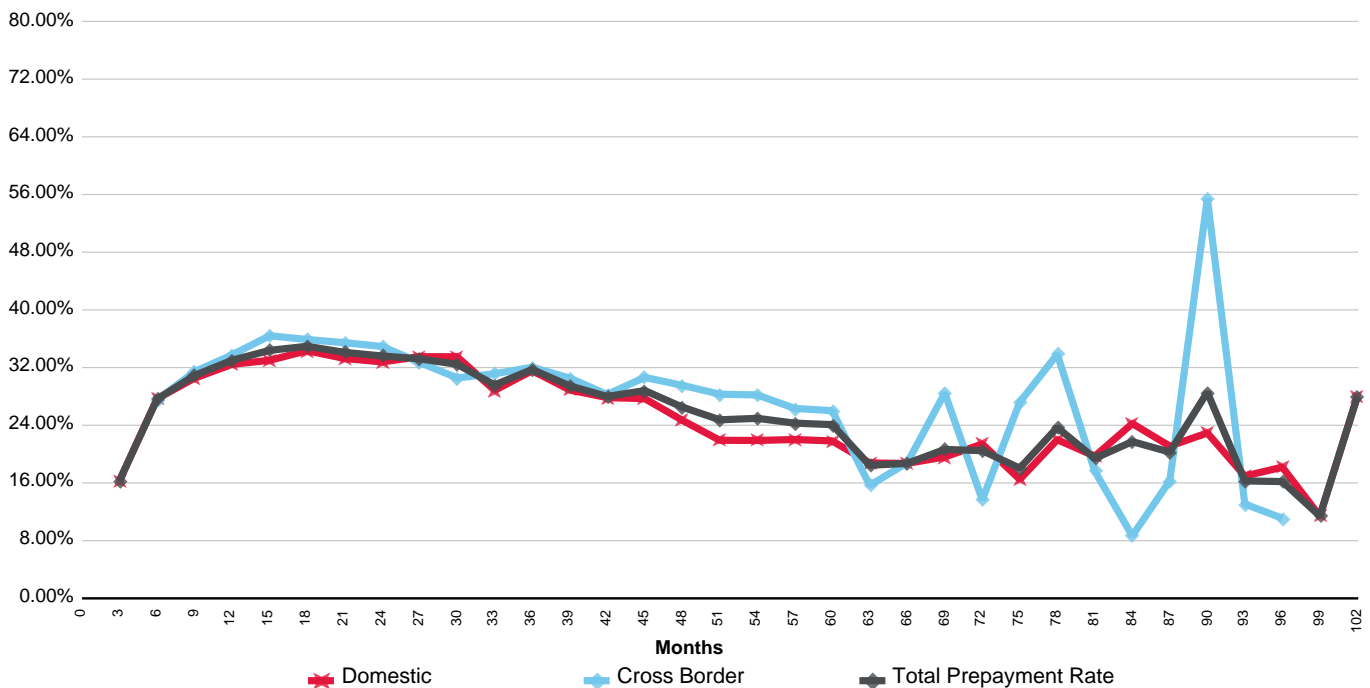
Prepayment Statistics - Non-Conforming

Australian Non-Conforming S&P Global Ratings Prepayment Index (SPPI) By Market



(%)	Jun-21	Sep-21	Dec-21	Mar-22	Jun-22	Sep-22	Dec-22	Mar-23	Jun-23	Sep-23	Dec-23	Mar-24
Domestic	32.80	30.70	34.13	31.02	31.19	35.05	40.61	32.48	39.22	36.54	36.84	31.28
Cross Border	30.02	37.58	34.53	27.68	30.86	33.97	37.40	34.99	36.08	37.30	37.68	34.05
Non-Conforming SPPI	31.23	34.10	34.32	29.23	31.02	34.46	38.91	33.72	37.52	36.93	37.29	32.66

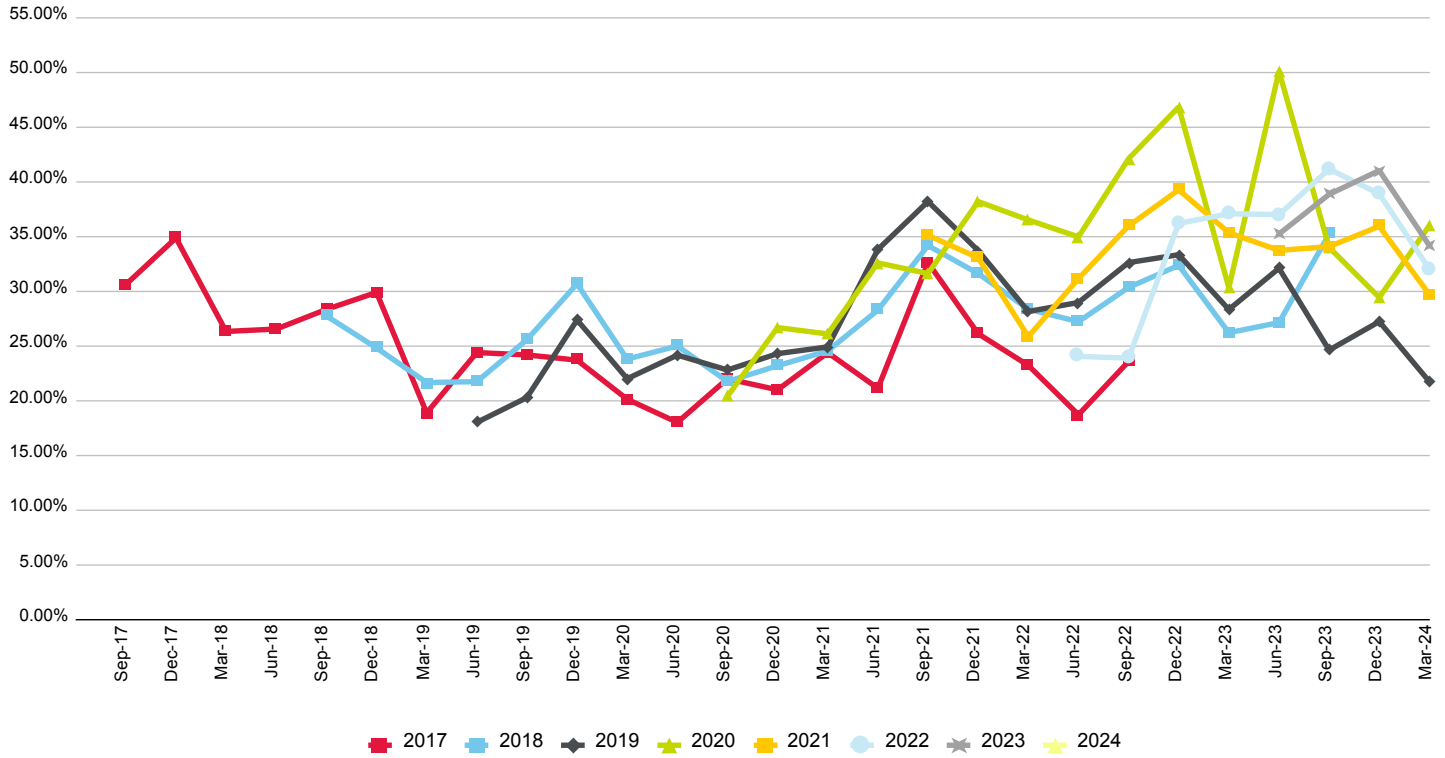
Annualised Quarterly Prepayment Rates - Months From Issue Date



Copyright © 2024 Standard & Poor's Financial Services LLC. All rights reserved. Reproduction in whole or in part prohibited except by permission. RMBS Performance Watch is subject to the full disclaimer on Page iii, Part 1.

Prepayment Statistics - Non-Conforming

Annualised Quarterly Prepayment Rate Index (By Year Of Issuance)



Annualised Quarterly Prepayment Rate Index - Months From Issue Date (By Year Of Issuance)

