

RMBS Performance Watch

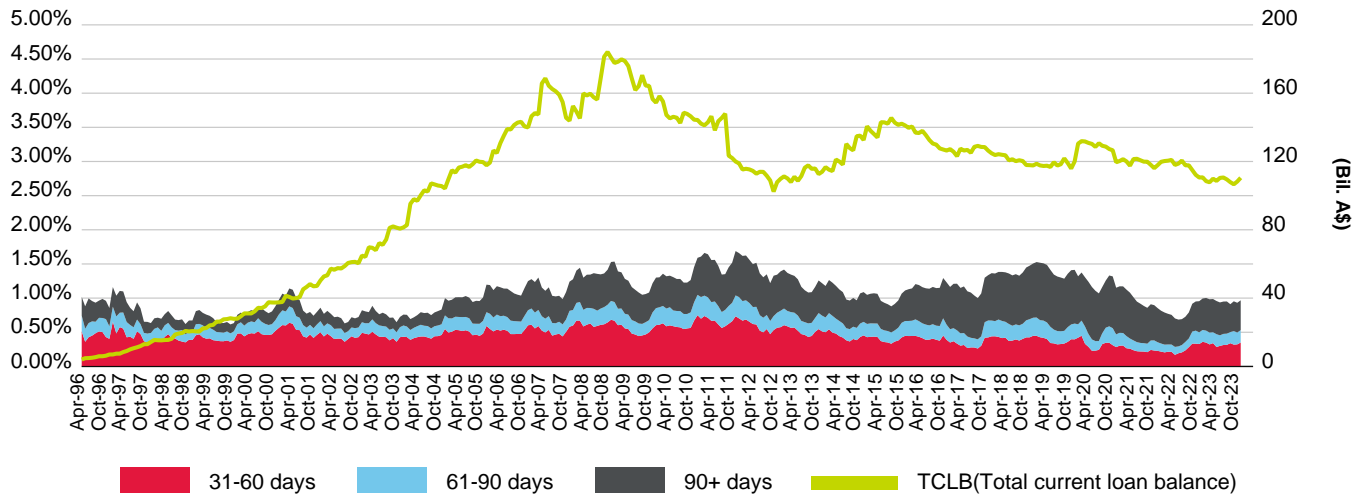
**Australia Part 2a – Prime Arrears &
Prepayment Statistics (Including Non-
Capital Market Issuance)**

As of March 31, 2024

This report does not constitute a rating action.

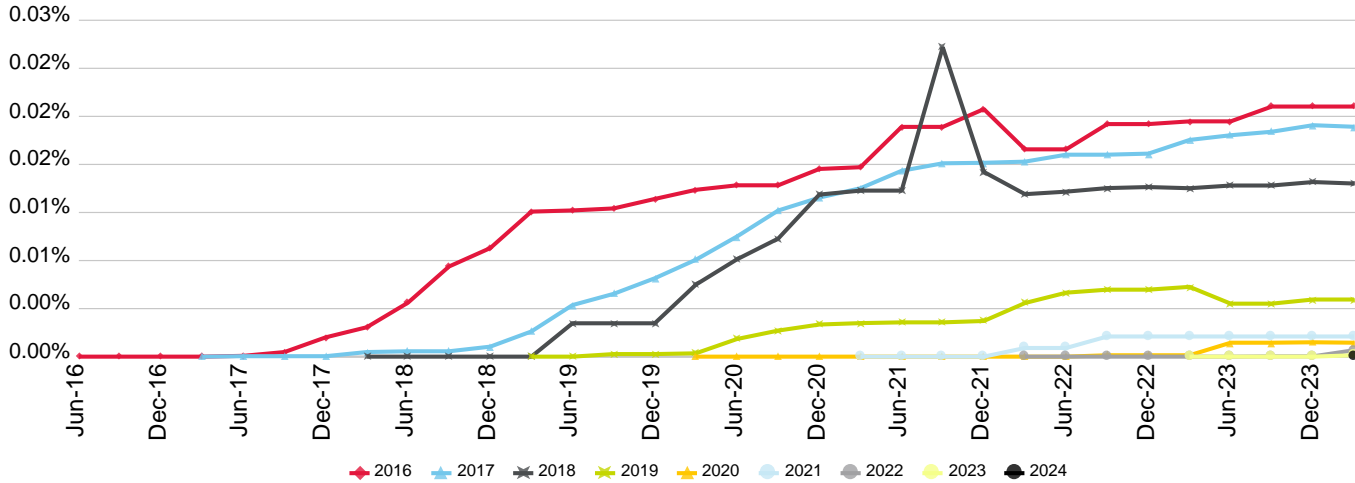
Arrears Statistics - Prime

Australia Prime S&P Global Ratings Mortgage Performance Index (SPIN)



(%)	Apr-23	May-23	Jun-23	Jul-23	Aug-23	Sep-23	Oct-23	Nov-23	Dec-23	Jan-24	Feb-24	Mar-24
31-60 days	0.36	0.35	0.32	0.34	0.28	0.30	0.31	0.32	0.34	0.32	0.32	0.35
61-90 days	0.17	0.17	0.17	0.16	0.19	0.15	0.16	0.16	0.16	0.20	0.17	0.18
90+ days	0.46	0.48	0.49	0.49	0.49	0.48	0.47	0.47	0.41	0.44	0.43	0.44
Prime SPIN	0.99	1.00	0.98	0.99	0.96	0.94	0.95	0.95	0.91	0.95	0.93	0.97
TCLB (Bil. A\$)	110.71	108.48	107.84	109.93	108.62	110.39	110.61	109.49	107.90	106.64	108.25	110.46

Cumulative Gross Losses As Percentage Of Total Initial Issuance By Year Of Issuance

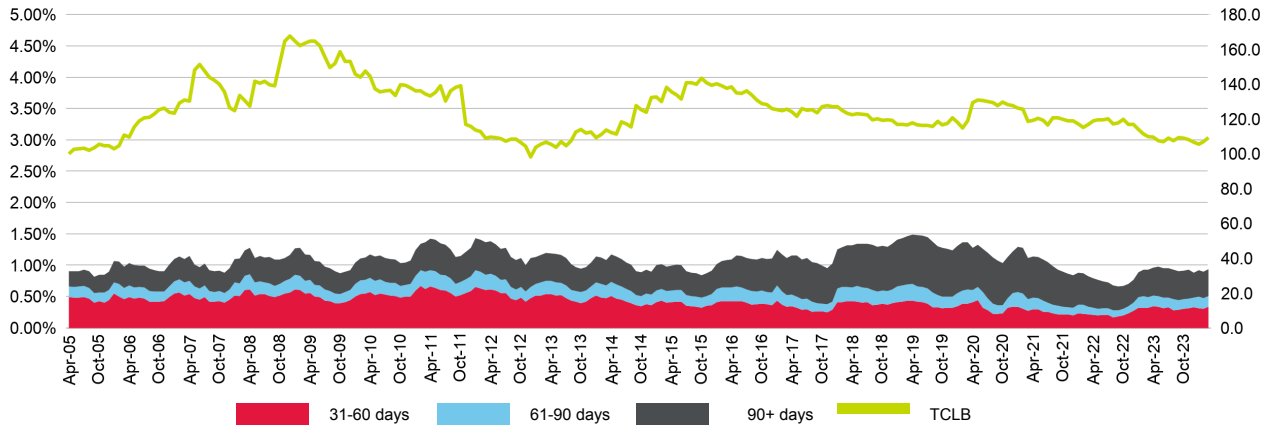


(%)	Jun-21	Sep-21	Dec-21	Mar-22	Jun-22	Sep-22	Dec-22	Mar-23	Jun-23	Sep-23	Dec-23	Mar-24
2024	0.000	0.000	0.000	0.000	0.000	0.000	0.000	0.000	0.000	0.000	0.000	0.000
2023	0.000	0.000	0.000	0.000	0.000	0.000	0.000	0.000	0.000	0.000	0.000	0.000
2022	0.000	0.000	0.000	0.000	0.000	0.000	0.000	0.000	0.000	0.000	0.000	0.001
2021	0.000	0.000	0.000	0.001	0.001	0.002	0.002	0.002	0.002	0.002	0.002	0.002
2020	0.000	0.000	0.000	0.000	0.000	0.000	0.000	0.000	0.001	0.001	0.001	0.001
2019	0.003	0.003	0.003	0.004	0.005	0.006	0.006	0.006	0.004	0.004	0.005	0.005
2018	0.014	0.026	0.015	0.014	0.014	0.014	0.014	0.014	0.014	0.014	0.015	0.014
2017	0.015	0.016	0.016	0.016	0.017	0.017	0.017	0.018	0.018	0.019	0.019	0.019
2016	0.019	0.019	0.021	0.017	0.017	0.019	0.019	0.020	0.020	0.021	0.021	0.021

Copyright © 2024 Standard & Poor's Financial Services LLC. All rights reserved. Reproduction in whole or in part prohibited except by permission. RMBS Performance Watch is subject to the full disclaimer on Page iii, Part 1.

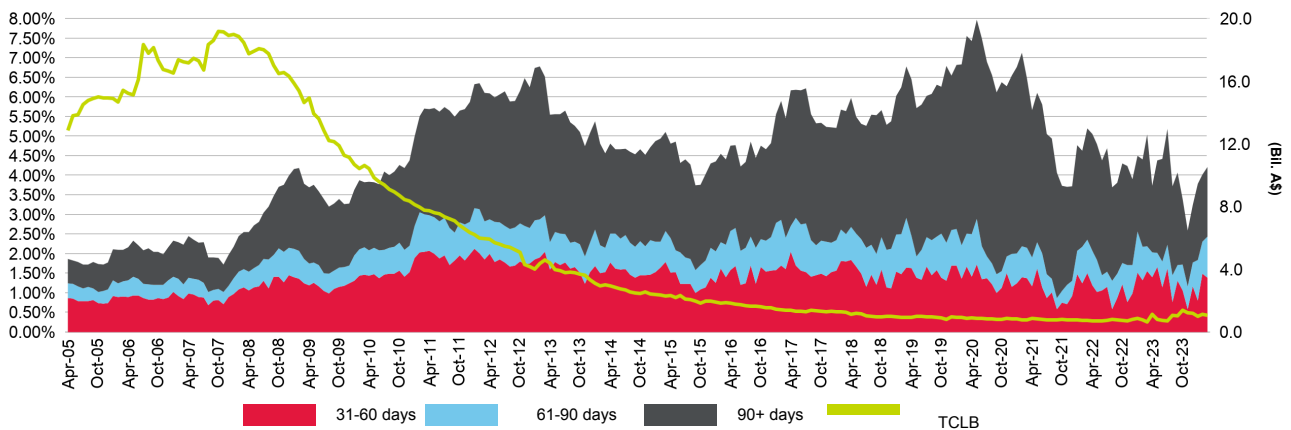
Arrears Statistics - Prime

Arrears Reported on a Full Doc Basis



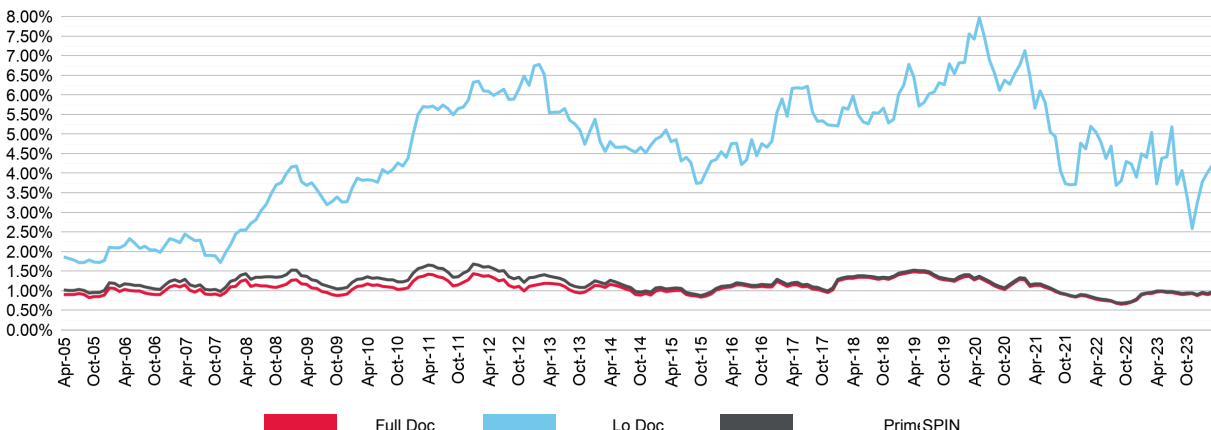
(%)	Apr-23	May-23	Jun-23	Jul-23	Aug-23	Sep-23	Oct-23	Nov-23	Dec-23	Jan-24	Feb-24	Mar-24
31-60 days	0.35	0.34	0.32	0.33	0.28	0.29	0.30	0.31	0.33	0.31	0.31	0.34
61-90 days	0.17	0.17	0.17	0.16	0.18	0.15	0.16	0.16	0.16	0.19	0.17	0.17
90+ days	0.45	0.46	0.47	0.47	0.47	0.46	0.46	0.46	0.40	0.42	0.42	0.42
Full Doc SPIN	0.97	0.98	0.96	0.96	0.93	0.91	0.92	0.93	0.89	0.93	0.90	0.94
TCLB (Bil. A\$)	109.60	107.68	107.09	109.21	107.57	109.34	109.23	108.25	106.71	105.64	107.12	109.41

Arrears Reported on a LoDoc Basis



(%)	Apr-23	May-23	Jun-23	Jul-23	Aug-23	Sep-23	Oct-23	Nov-23	Dec-23	Jan-24	Feb-24	Mar-24
31-60 days	1.40	1.66	1.13	1.62	0.76	1.31	1.06	0.58	1.16	0.81	1.49	1.39
61-90 days	0.64	0.36	0.67	0.61	0.68	0.40	0.67	0.59	0.61	1.04	0.81	1.05
90+ days	1.70	2.37	2.63	2.96	2.28	2.36	1.66	1.43	1.47	1.94	1.72	1.78
Lo Doc SPIN	3.73	4.38	4.42	5.18	3.72	4.07	3.39	2.60	3.24	3.78	4.02	4.21
TCLB (Bil. A\$)	1.12	0.80	0.75	0.72	1.05	1.04	1.39	1.24	1.19	1.00	1.13	1.05

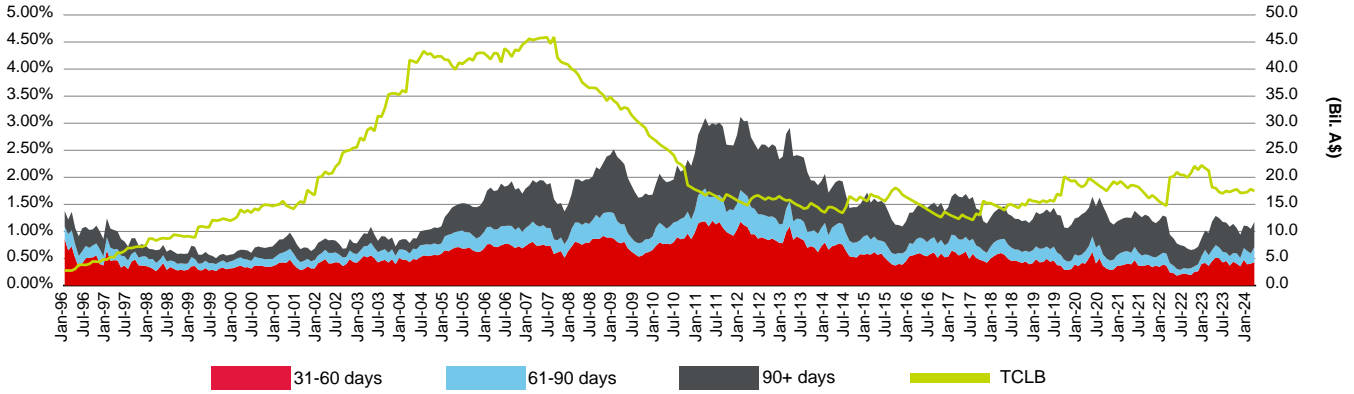
Document Type Comparison



(%)	Apr-23	May-23	Jun-23	Jul-23	Aug-23	Sep-23	Oct-23	Nov-23	Dec-23	Jan-24	Feb-24	Mar-24
Full Doc SPIN	0.97	0.98	0.96	0.96	0.93	0.91	0.92	0.93	0.89	0.93	0.90	0.94
Lo Doc SPIN	3.73	4.38	4.42	5.18	3.72	4.07	3.39	2.60	3.24	3.78	4.02	4.21
Prime SPIN	0.99	1.00	0.98	0.99	0.96	0.94	0.95	0.95	0.91	0.95	0.93	0.97
Full Doc % Prime TCLB	98.99	99.26	99.31	99.34	99.03	99.06	98.74	98.87	98.90	99.06	98.96	99.05
Lo Doc % Prime TCLB	1.01	0.74	0.69	0.66	0.97	0.94	1.26	1.13	1.10	0.94	1.04	0.95

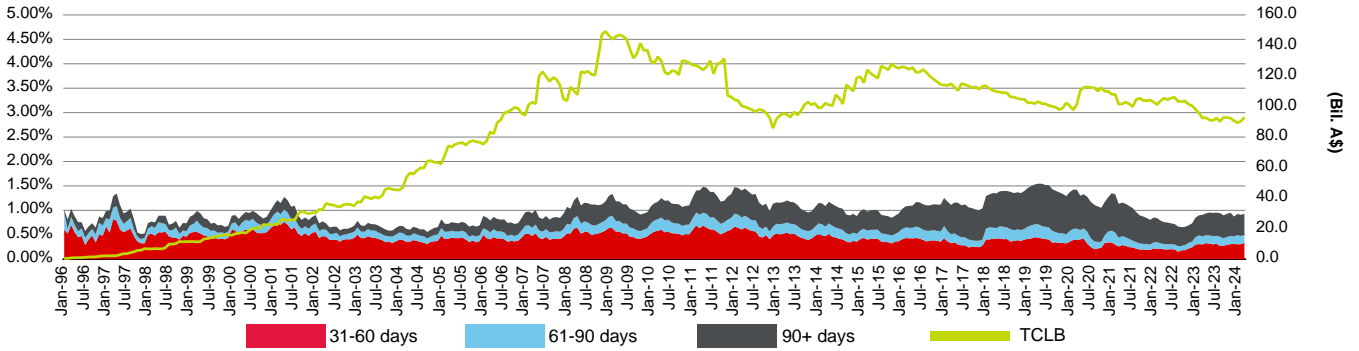
Arrears Statistics - Prime

Arrears Reported on a Missed Payment Basis



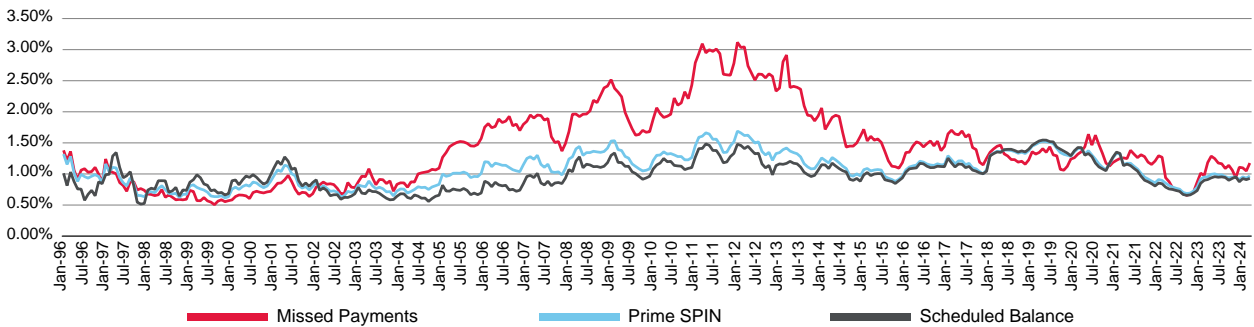
(%)	Apr-23	May-23	Jun-23	Jul-23	Aug-23	Sep-23	Oct-23	Nov-23	Dec-23	Jan-24	Feb-24	Mar-24
31-60 days	0.52	0.50	0.43	0.46	0.37	0.44	0.40	0.36	0.47	0.39	0.41	0.43
61-90 days	0.23	0.20	0.20	0.16	0.17	0.16	0.19	0.15	0.22	0.25	0.19	0.28
90+ days	0.54	0.54	0.55	0.55	0.54	0.54	0.47	0.43	0.42	0.46	0.46	0.47
Total	1.29	1.25	1.18	1.16	1.09	1.14	1.06	0.94	1.11	1.10	1.05	1.18
TCLB (Bil. A\$)	18.01	17.26	17.03	17.47	17.30	17.57	17.79	17.14	17.14	17.30	17.82	17.46

Arrears Reported on a Scheduled Balance Basis



(%)	Apr-23	May-23	Jun-23	Jul-23	Aug-23	Sep-23	Oct-23	Nov-23	Dec-23	Jan-24	Feb-24	Mar-24
31-60 days	0.33	0.32	0.30	0.32	0.27	0.27	0.30	0.31	0.32	0.30	0.31	0.34
61-90 days	0.16	0.17	0.17	0.16	0.19	0.15	0.16	0.17	0.15	0.19	0.17	0.16
90+ days	0.44	0.47	0.47	0.47	0.48	0.47	0.47	0.48	0.41	0.43	0.43	0.43
Total	0.94	0.96	0.95	0.95	0.94	0.90	0.93	0.95	0.87	0.93	0.91	0.93
TCLB (Bil. A\$)	92.70	91.22	90.81	92.46	90.24	92.81	92.83	92.35	90.76	89.34	90.43	93.00

Arrears Calculation Method Comparison

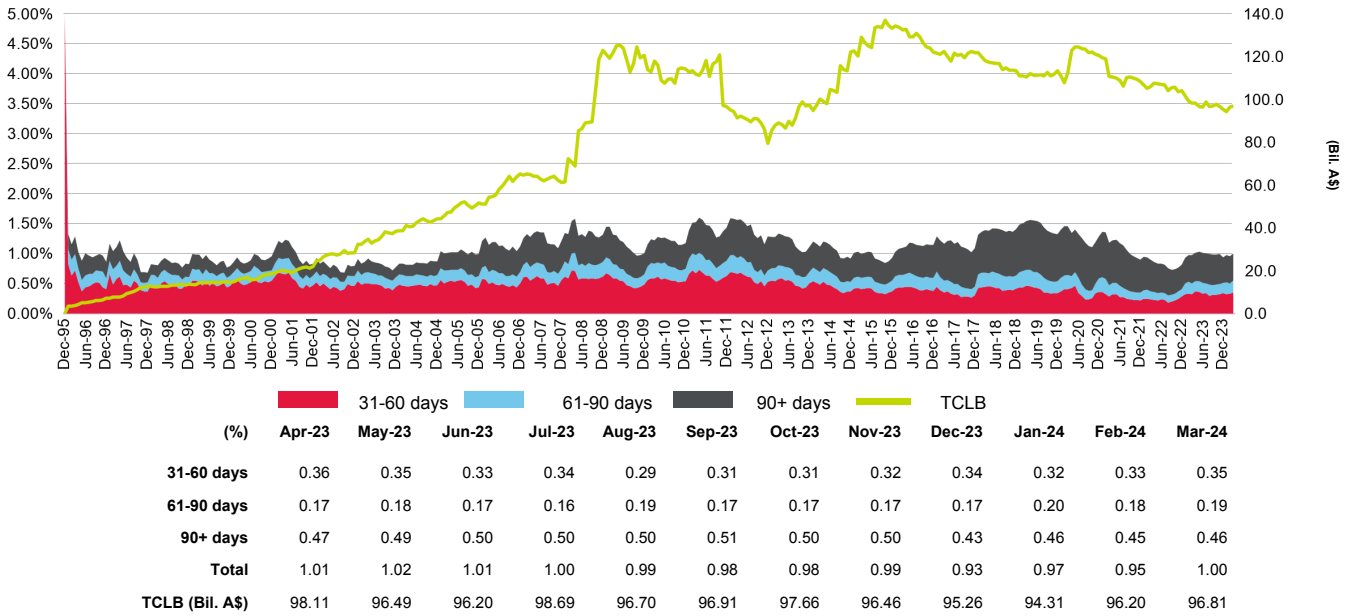


(%)	Apr-23	May-23	Jun-23	Jul-23	Aug-23	Sep-23	Oct-23	Nov-23	Dec-23	Jan-24	Feb-24	Mar-24
Missed Payments	1.29	1.25	1.18	1.16	1.09	1.14	1.06	0.94	1.11	1.10	1.05	1.18
Scheduled Balance	0.94	0.96	0.95	0.95	0.94	0.90	0.93	0.95	0.87	0.93	0.91	0.93
PrimeSPIN	0.99	1.00	0.98	0.99	0.96	0.94	0.95	0.95	0.91	0.95	0.93	0.97

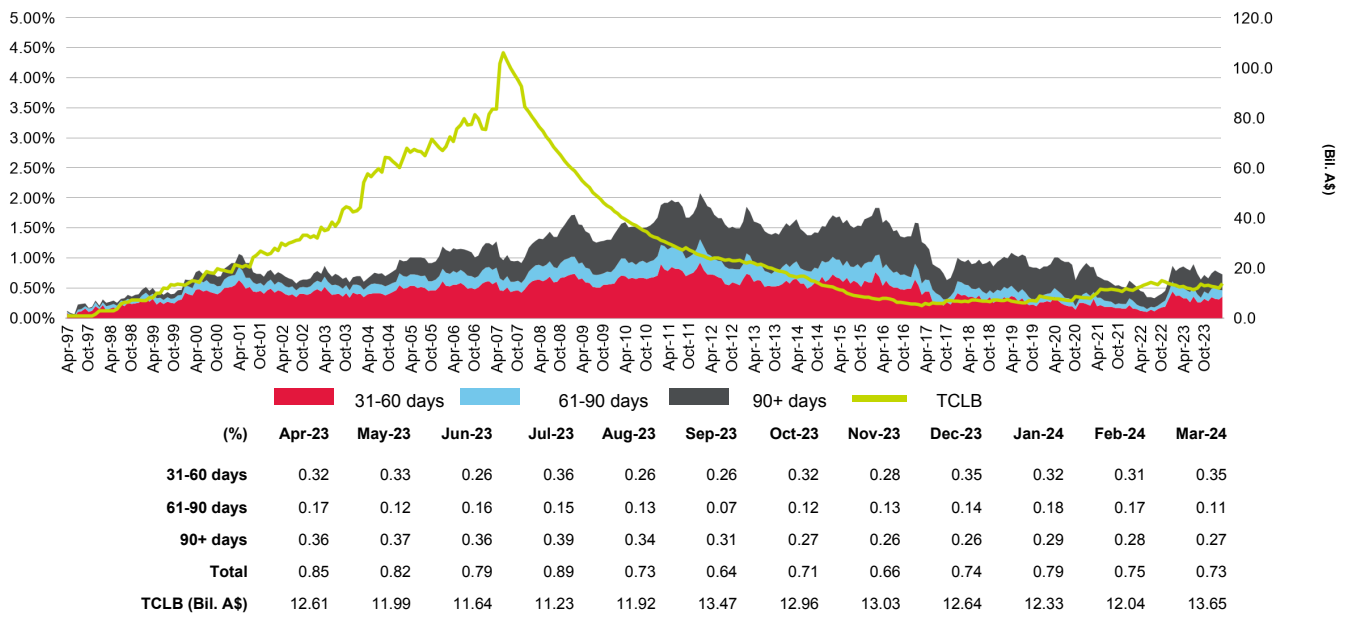
Copyright © 2024 Standard & Poor's Financial Services LLC. All rights reserved. Reproduction in whole or in part prohibited except by permission. RMBS Performance Watch is subject to the full disclaimer on Page iii, Part 1.

Arrears Statistics - Prime

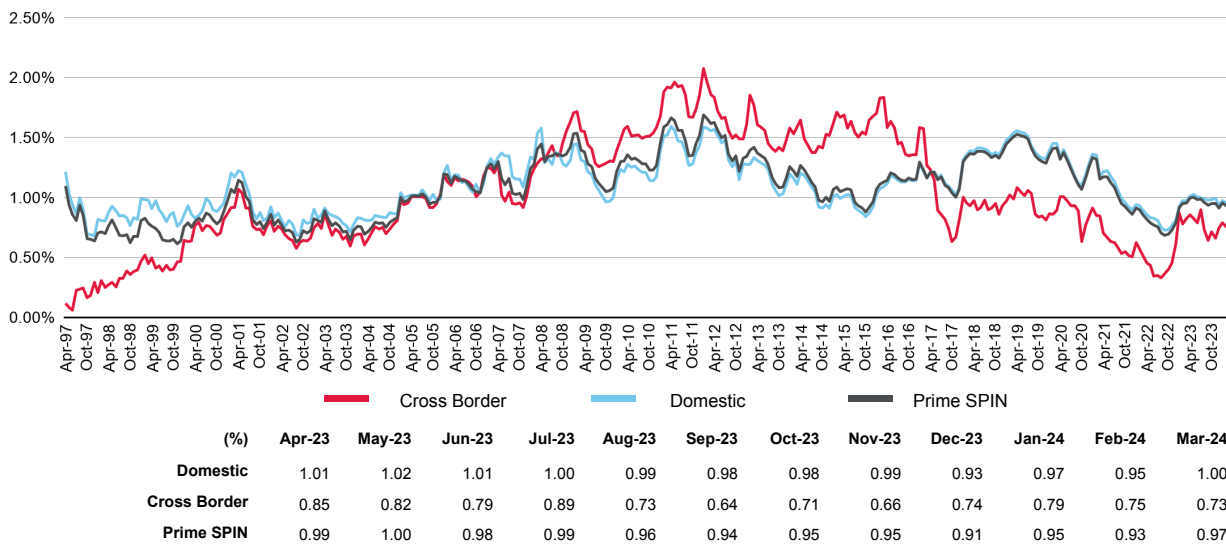
Arrears Domestic Issues



Arrears Cross Border Issues

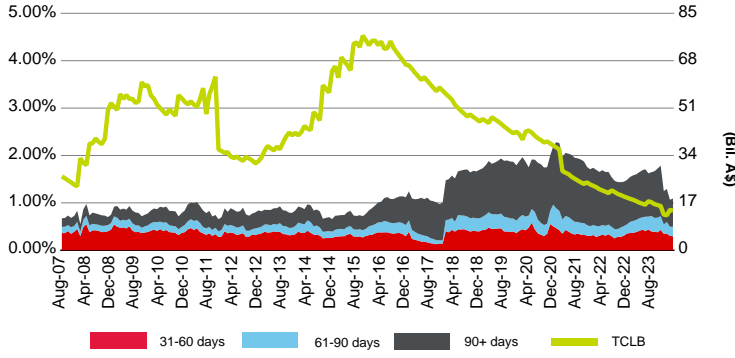


Market Comparison



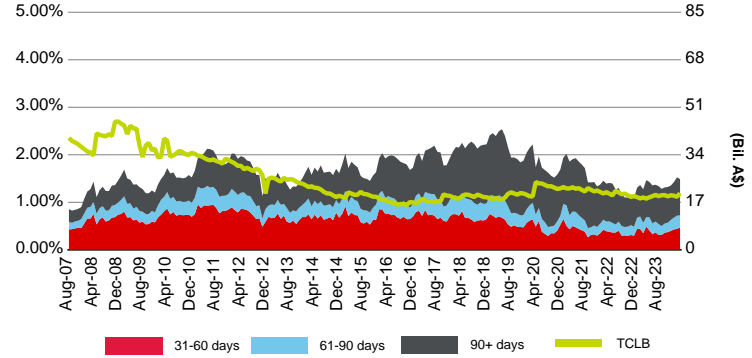
Arrears Statistics - Prime

Major Banks



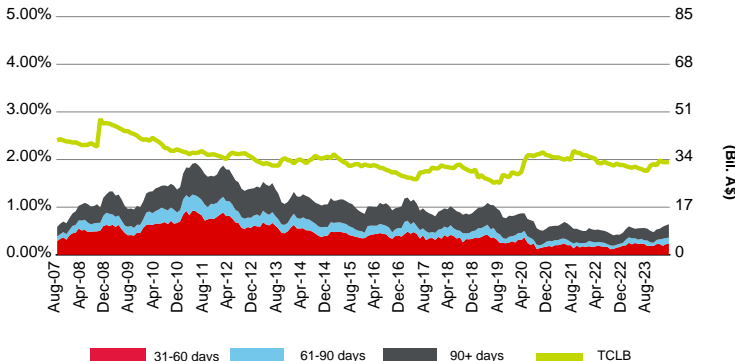
(%)	Oct-23	Nov-23	Dec-23	Jan-24	Feb-24	Mar-24
31-60 days	0.38	0.43	0.35	0.35	0.31	0.30
61-90 days	0.31	0.29	0.20	0.24	0.19	0.20
90+ days	1.04	1.06	0.70	0.70	0.57	0.59
Major Banks SPIN	1.73	1.78	1.25	1.29	1.07	1.09
TCLB (Bil. A\$)	16.21	15.87	12.77	12.55	14.50	14.22

Regional Banks



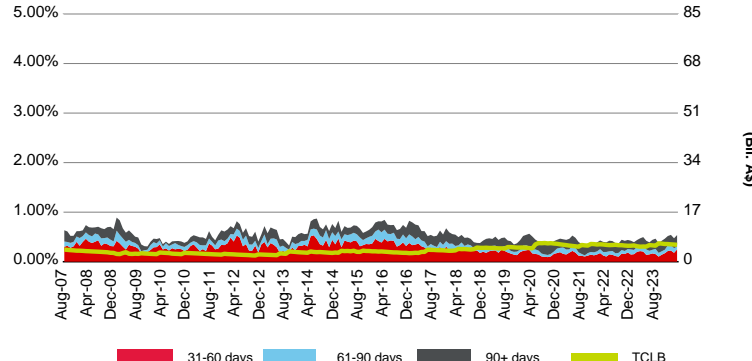
(%)	Oct-23	Nov-23	Dec-23	Jan-24	Feb-24	Mar-24
31-60 days	0.36	0.37	0.40	0.43	0.44	0.47
61-90 days	0.19	0.20	0.23	0.25	0.28	0.25
90+ days	0.76	0.75	0.72	0.75	0.81	0.76
Regional Banks SPIN	1.31	1.32	1.35	1.43	1.53	1.49
TCLB (Bil. A\$)	19.57	19.14	19.51	19.36	18.98	20.26

Other Banks



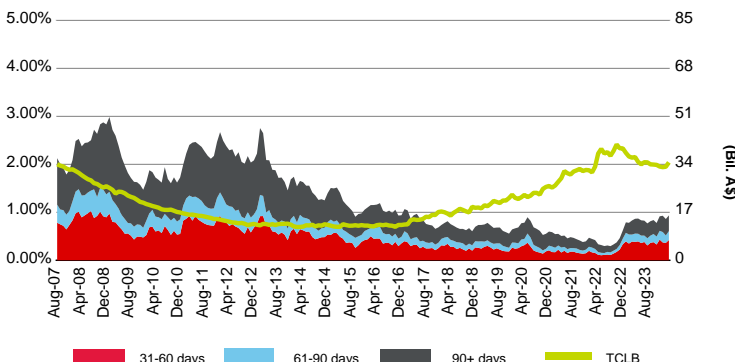
(%)	Oct-23	Nov-23	Dec-23	Jan-24	Feb-24	Mar-24
31-60 days	0.19	0.23	0.23	0.19	0.22	0.23
61-90 days	0.07	0.09	0.10	0.15	0.13	0.12
90+ days	0.22	0.22	0.22	0.25	0.27	0.28
Other Banks SPIN	0.48	0.53	0.55	0.59	0.62	0.64
TCLB (Bil. A\$)	32.37	31.97	33.66	33.13	33.03	33.04

Non-Bank Financial Institutions



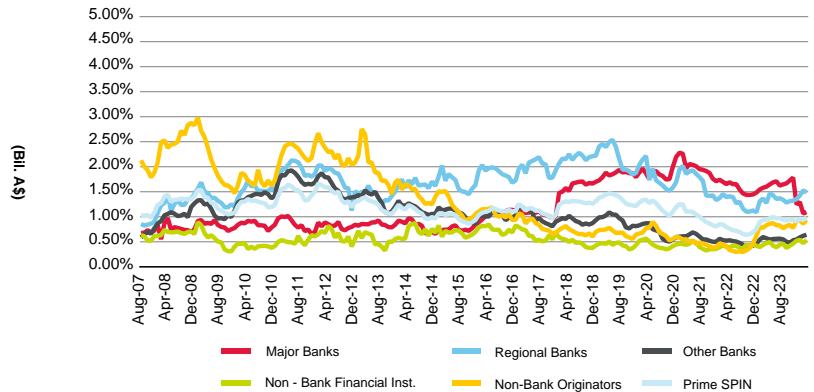
(%)	Oct-23	Nov-23	Dec-23	Jan-24	Feb-24	Mar-24
31-60 days	0.14	0.17	0.22	0.23	0.18	0.25
61-90 days	0.07	0.07	0.11	0.11	0.09	0.06
90+ days	0.21	0.22	0.19	0.21	0.20	0.23
Non-Bank Financial Institutions SPIN	0.42	0.46	0.52	0.54	0.47	0.54
TCLB (Bil. A\$)	6.20	6.07	6.05	5.95	5.89	5.78

Non-Bank Originators



(%)	Oct-23	Nov-23	Dec-23	Jan-24	Feb-24	Mar-24
31-60 days	0.38	0.33	0.43	0.37	0.36	0.42
61-90 days	0.17	0.17	0.18	0.22	0.16	0.19
90+ days	0.29	0.28	0.30	0.34	0.34	0.33
Non-Bank Originators SPIN	0.84	0.78	0.92	0.93	0.86	0.94
TCLB (Bil. A\$)	33.92	33.80	33.22	33.00	33.14	34.69

Financial Institutions Comparison

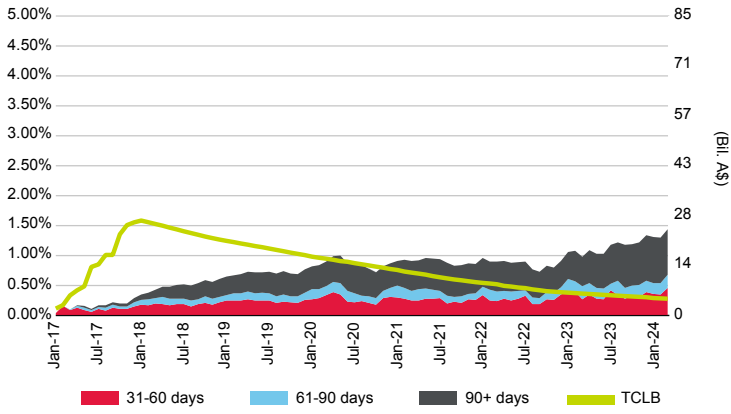


(%)	Oct-23	Nov-23	Dec-23	Jan-24	Feb-24	Mar-24
Major Banks	1.73	1.78	1.25	1.29	1.07	1.09
Regional Banks	1.31	1.32	1.35	1.43	1.53	1.49
Other Banks	0.48	0.53	0.55	0.59	0.62	0.64
Non-Bank Financial Institutions	0.42	0.46	0.52	0.54	0.47	0.54
Non-Bank Originators	0.84	0.78	0.92	0.93	0.86	0.94
Prime SPIN	0.95	0.95	0.91	0.95	0.93	0.97

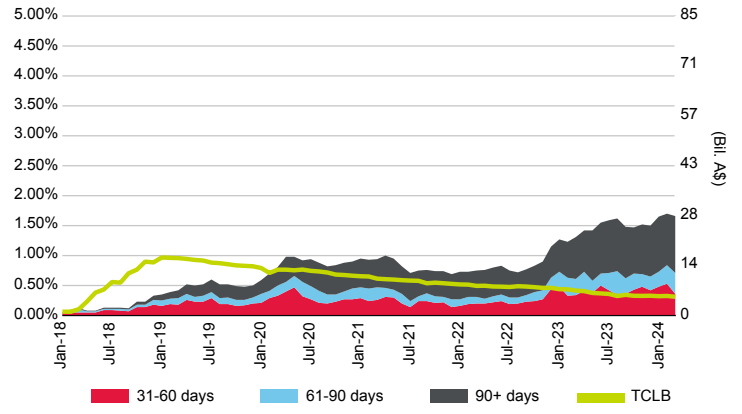
Arrears Statistics - Prime

By Year Of Issuance

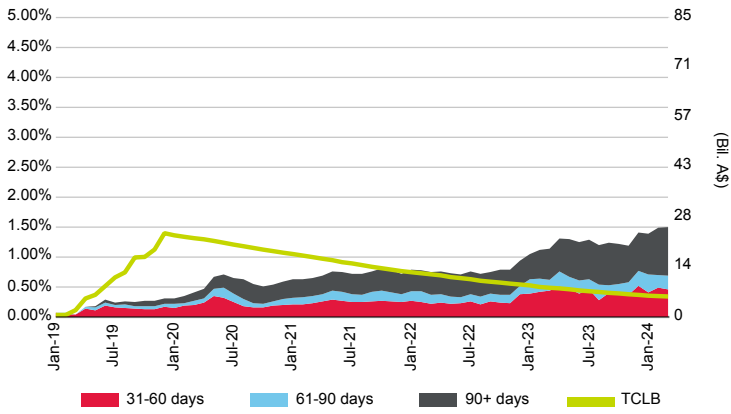
2017



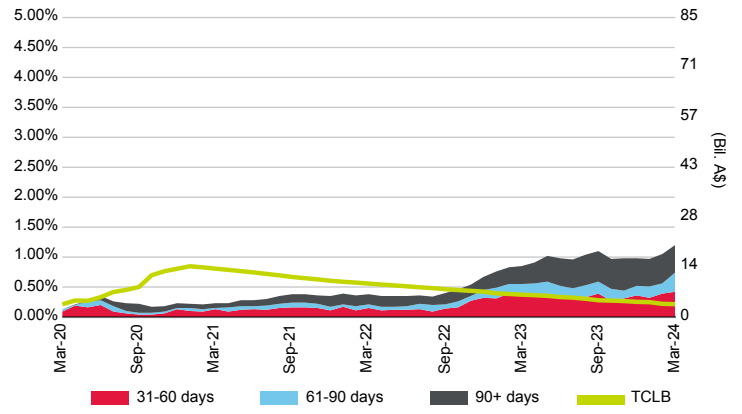
2018



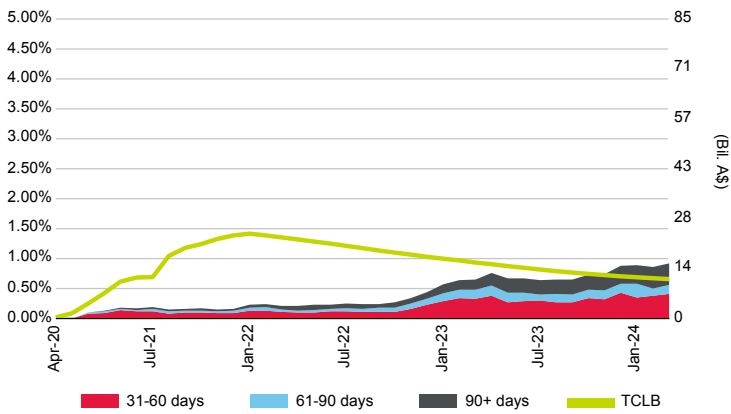
2019



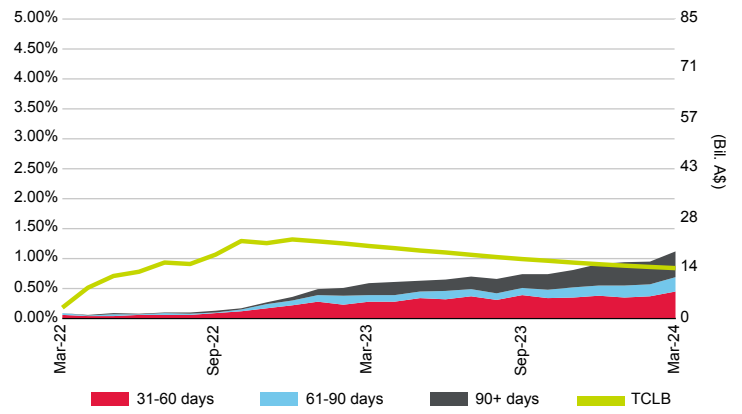
2020



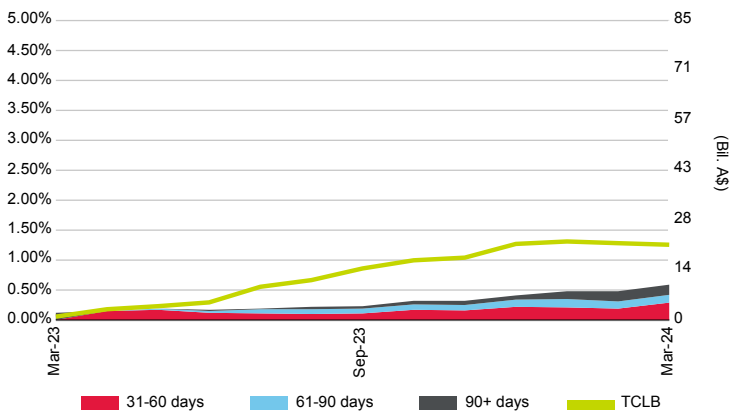
2021



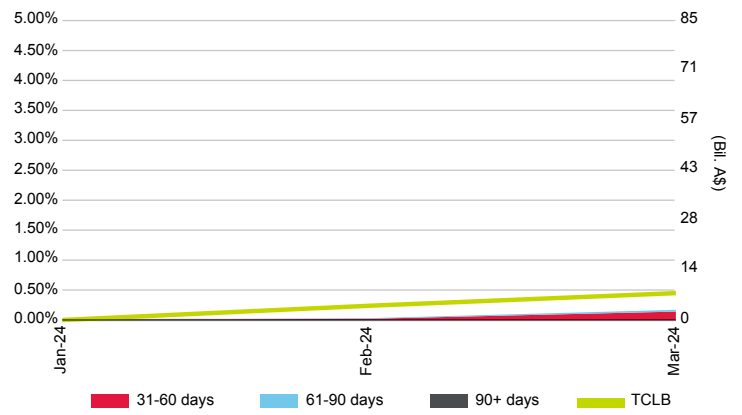
2022



2023

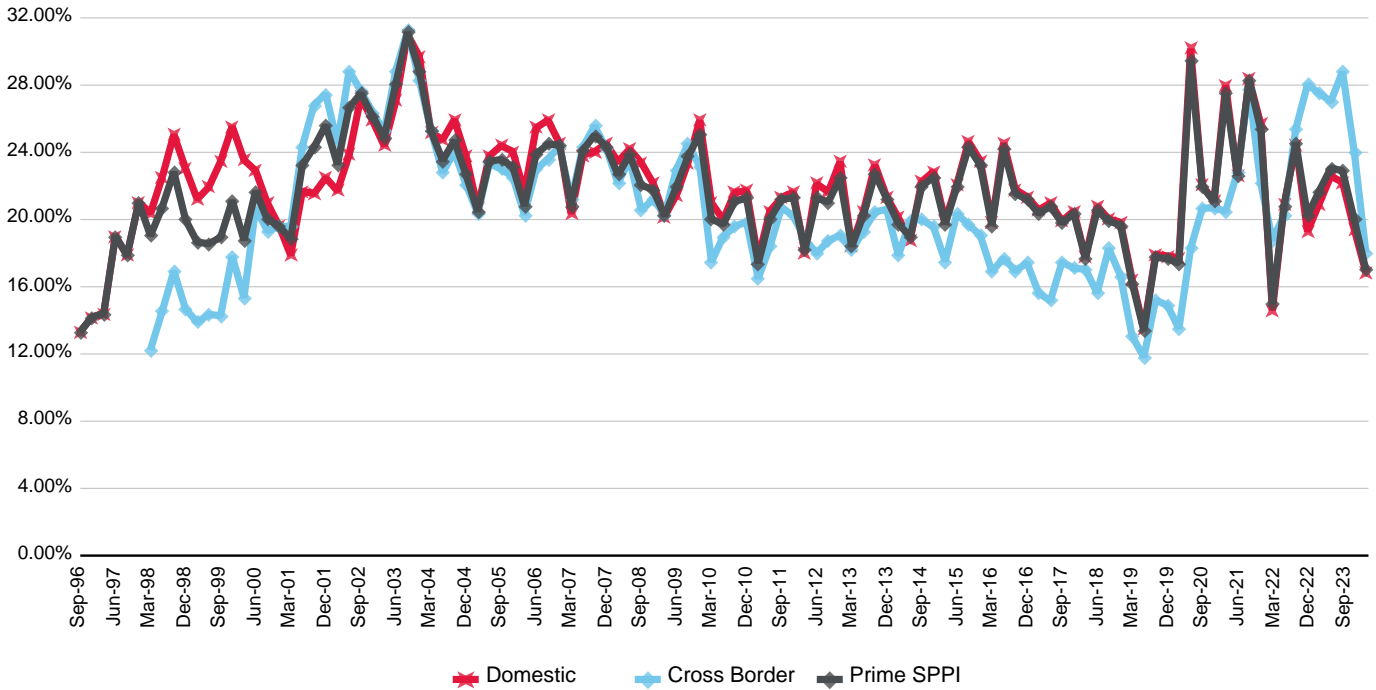


2024



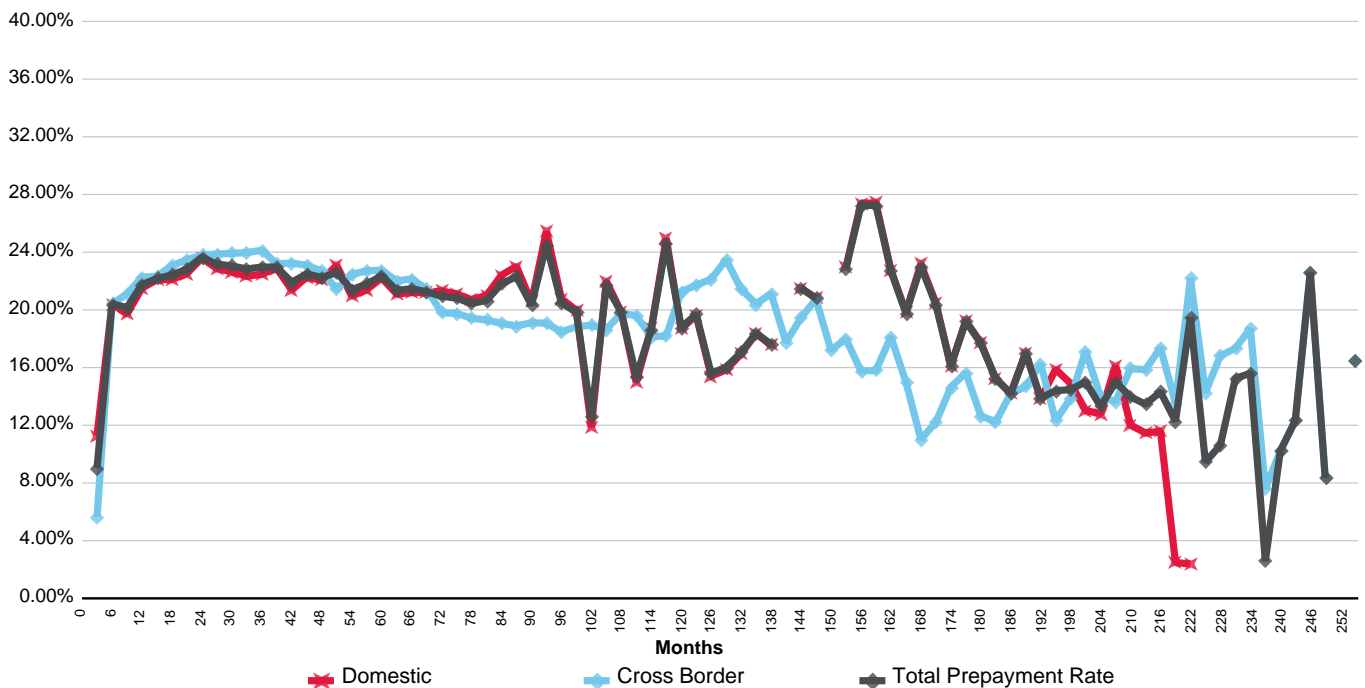
Prepayment Statistics - Prime

Australian Prime S&P Global Ratings Prepayment Index (SPPI) By Market



(%)	Jun-21	Sep-21	Dec-21	Mar-22	Jun-22	Sep-22	Dec-22	Mar-23	Jun-23	Sep-23	Dec-23	Mar-24
Domestic	22.61	28.36	25.69	14.58	20.87	24.47	19.29	20.94	22.58	22.21	19.43	16.85
Cross Border	22.81	27.80	22.15	18.79	20.25	25.39	28.03	27.52	27.02	28.81	24.04	18.02
Prime SPPI	22.62	28.31	25.37	14.98	20.81	24.57	20.22	21.69	23.06	22.90	19.99	16.99

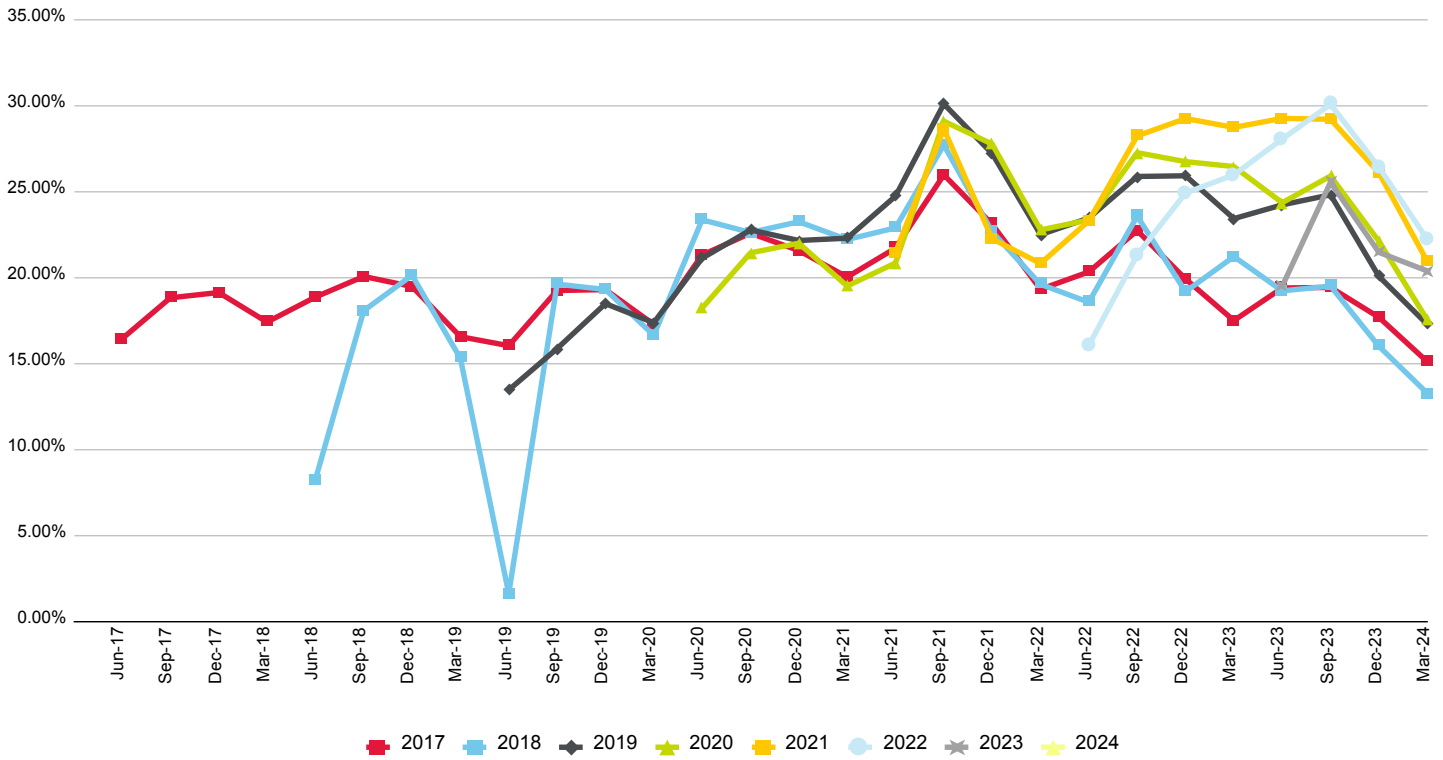
Annualised Quarterly Prepayment Rates - Months From Issue Date



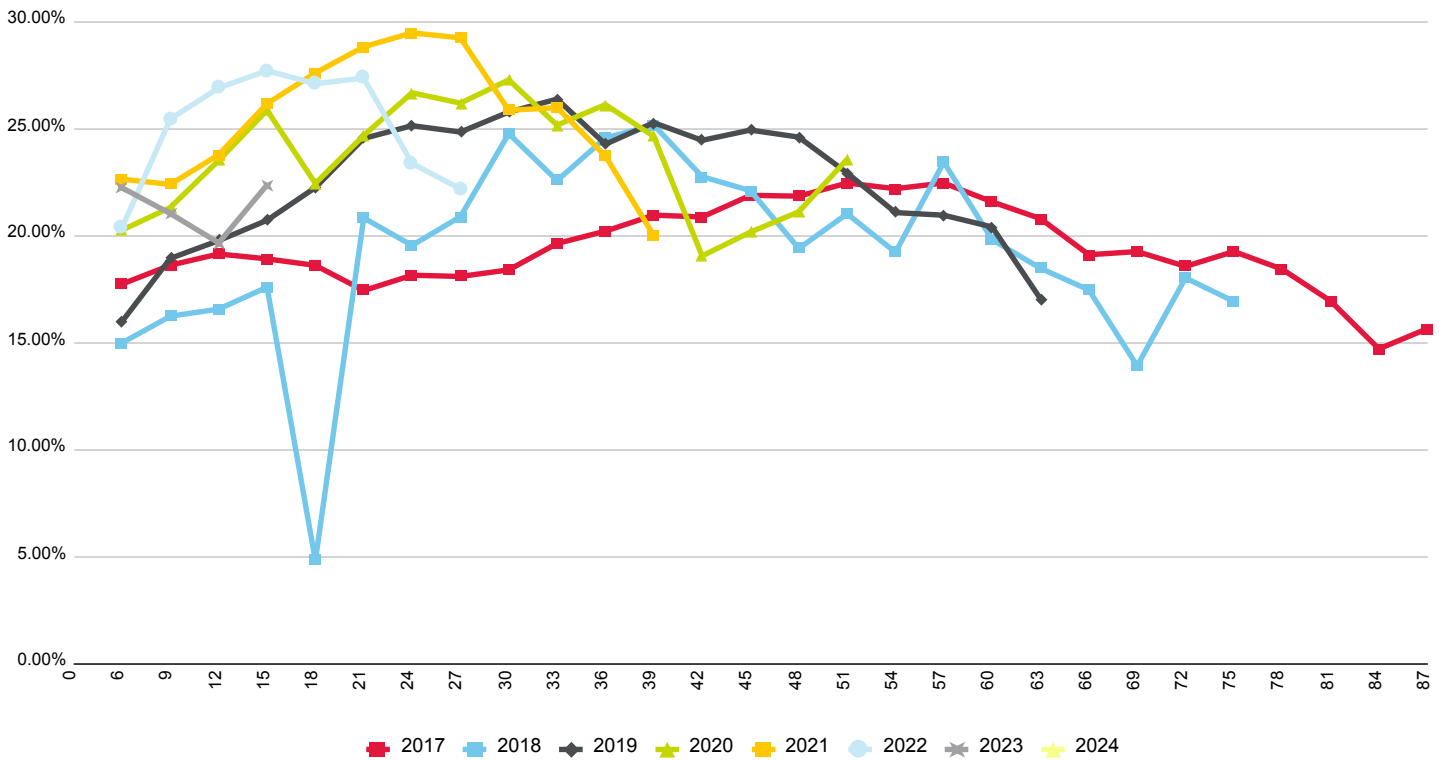
Copyright © 2024 Standard & Poor's Financial Services LLC. All rights reserved. Reproduction in whole or in part prohibited except by permission. RMBS Performance Watch is subject to the full disclaimer on Page iii, Part 1.

Prepayment Statistics - Prime

Annualised Quarterly Prepayment Rate Index (By Year Of Issuance)



Annualised Quarterly Prepayment Rate Index - Months From Issue Date (By Year Of Issuance)



RMBS Performance Watch

New Issuance Overview

As of March 31, 2024

Market Overview

Recent Issues

The following transactions have issued RMBS in the past three months, hence there may be insufficient history available to create the graphs titled "Loan Pool Arrears Performance vs. SPIN" and "Loan Pool Repayment Rate & Outstanding Security Balances".

Transaction Name	Asset Sub Class	Sponsor	Closing Date
Series 2024-1 WST Trust	Prime	Westpac Banking Corp.	05-Feb-24
La Trobe Financial Capital Markets Trust 2024-1	Non- Conforming	La Trobe Financial Services Pty Ltd.	15-Feb-24
Triton Bond Trust 2024-1 Series 1	Prime	Columbus Capital Pty Ltd.	22-Feb-24
Pepper Residential Securities Trust No. 39	Non- Conforming	Pepper HomeLoans Pty Ltd.	28-Feb-24
Series 2024-1 REDS Trust	Prime	Members Equity Bank Ltd.	05-Mar-24

Market Overview

RMBS Outstandings as at Mar. 31, 2024

	No. Transactions	Mil. A\$	%
Prime	217	111,767.24	89.39
Non-Conforming	41	13,260.68	10.61
Total	258	125,027.92	100.00
Domestic	207	104,785.16	83.81
Global	51	20,242.76	16.19
Total	258	125,027.92	100.00
Major Banks	22	14,216.35	11.37
Non-Bank Financial Institutions	20	5,940.43	4.75
Non-Bank Originators	136	49,047.34	39.23
Other Banks	51	34,498.22	27.59
Regional Banks	29	21,325.58	17.06
Total	258	125,027.92	100.00
	No. Classes	Mil. A\$	%
AUD	1,626	123,820.31	99.03
EUR	2	62.84	0.05
JPY	4	722.03	0.58
USD	8	422.74	0.34
Total	1,640	125,027.92	100.00

Top 10 Sponsors by New RMBS Issues

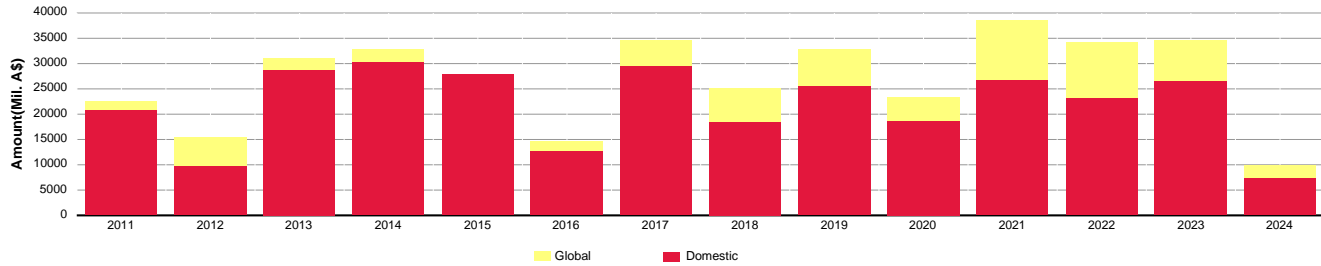
Yr Ending Mar. 31, 2024 (Mil. A\$) incl. Other*		
1	Columbus Capital Pty Ltd.	3,480.53
2	FirstMac Ltd.	3,265.52
3	Commonwealth Bank of Australia	3,210.52
4	La Trobe Financial Services Pty Ltd.	3,033.20
5	Pepper HomeLoans Pty Ltd.	2,674.64
6	Westpac Banking Corp.	2,591.15
7	Macquarie Bank Ltd.	1,712.96
8	ING Bank (Australia) Ltd.	1,685.11
9	BC Securities Pty Ltd.	1,239.66
10	Members Equity Bank Ltd.	936.25

Top 10 Sponsors by RMBS Outstandings

at Mar. 31, 2024 (Mil. A\$) incl. Other*		
1	ING Bank (Australia) Ltd.	14,708.78
2	Suncorp-Metway Ltd.	14,209.81
3	FirstMac Ltd.	11,157.58
4	Columbus Capital Pty Ltd.	8,977.74
5	AMP Bank Ltd.	7,482.47
6	Commonwealth Bank of Australia	7,382.84
7	Pepper HomeLoans Pty Ltd.	6,735.16
8	Macquarie Bank Ltd.	5,978.72
9	Westpac Banking Corp.	5,081.63
10	RESIMAC Ltd.	4,957.34

Market Overview

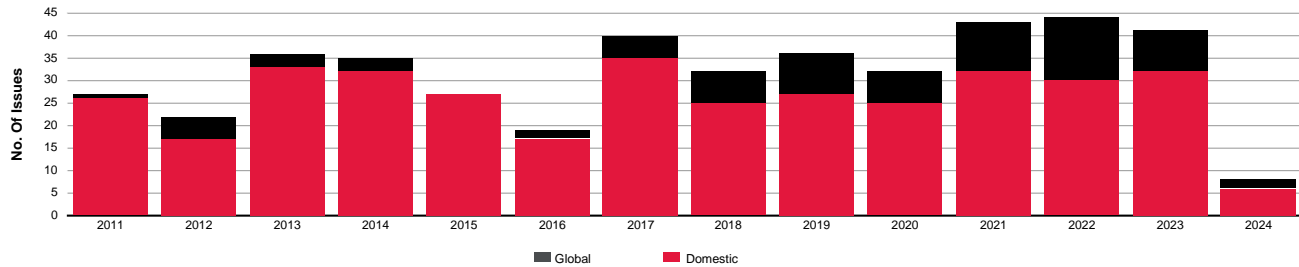
S&P Global Ratings Rated New Issuance
Domestic / Euro / Global (Mil. A\$)



Amount (Mil. A\$)	2011	2012	2013	2014	2015	2016	2017	2018	2019	2020	2021	2022	2023	2024
Domestic	20,759.36	9,702.00	28,743.00	30,102.28	27,960.36	12,748.16	29,456.32	18,487.30	25,402.30	18,723.10	26,582.42	23,176.60	26,570.90	7,300.00
Sub-Total Domestic	20,759.36	9,702.00	28,743.00	30,102.28	27,960.36	12,748.16	29,456.32	18,487.30	25,402.30	18,723.10	26,582.42	23,176.60	26,570.90	7,300.00
Global	1,890.77	5,623.51	2,474.02	2,782.75	0.00	1,983.24	5,272.10	6,707.10	7,425.61	4,730.60	11,953.83	11,021.84	7,876.47	2,750.00
Sub-Total Offshore	1,890.77	5,623.51	2,474.02	2,782.75	0.00	1,983.24	5,272.10	6,707.10	7,425.61	4,730.60	11,953.83	11,021.84	7,876.47	2,750.00
Total	22,650.13	15,325.51	31,217.01	32,885.03	27,960.36	14,731.40	34,728.43	25,194.40	32,827.91	23,453.69	38,536.25	34,198.44	34,447.37	10,050.00

%	2011	2012	2013	2014	2015	2016	2017	2018	2019	2020	2021	2022	2023	2024
Domestic	91.65	63.31	92.07	91.54	100.00	86.54	84.82	73.38	77.38	79.83	68.98	67.77	77.13	72.64
Sub-Total Domestic	91.65	63.31	92.07	91.54	100.00	86.54	84.82	73.38	77.38	79.83	68.98	67.77	77.13	72.64
Global	8.35	36.69	7.93	8.46	0.00	13.46	15.18	26.62	22.62	20.17	31.02	32.23	22.87	27.36
Sub-Total Global	8.35	36.69	7.93	8.46	0.00	13.46	15.18	26.62	22.62	20.17	31.02	32.23	22.87	27.36
Total	100.00	100.00	100.00	100.00	100.00	100.00	100.00	100.00	100.00	100.00	100.00	100.00	100.00	100.00

S&P Global Ratings Rated New Issuance
Domestic / Euro / Global (No. of Issues)

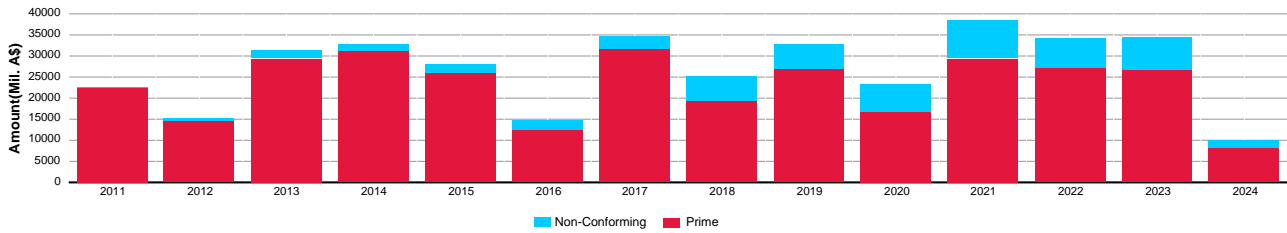


No of Deals	2011	2012	2013	2014	2015	2016	2017	2018	2019	2020	2021	2022	2023	2024
Domestic	26	17	33	32	27	17	35	25	27	25	32	30	32	6
Sub-Total Domestic	26	17	33	32	27	17	35	25	27	25	32	30	32	6
Global	1	5	3	3	0	2	5	7	9	7	11	14	9	2
Sub-Total Offshore	1	5	3	3	0	2	5	7	9	7	11	14	9	2
Total	27	22	36	35	27	19	40	32	36	32	43	44	41	8

%	2011	2012	2013	2014	2015	2016	2017	2018	2019	2020	2021	2022	2023	2024
Domestic	96.30	77.27	91.67	91.43	100.00	89.47	87.50	78.13	75.00	78.13	74.42	68.18	78.05	75.00
Sub-Total Domestic	96.30	77.27	91.67	91.43	100.00	89.47	87.50	78.13	75.00	78.13	74.42	68.18	78.05	75.00
Global	3.70	22.73	8.33	8.57	0.00	10.53	12.50	21.88	25.00	21.88	25.58	31.82	21.95	25.00
Sub-Total Global	3.70	22.73	8.33	8.57	0.00	10.53	12.50	21.88	25.00	21.88	25.58	31.82	21.95	25.00
Total	100.00	100.00	100.00	100.00	100.00	100.00	100.00	100.00	100.00	100.00	100.00	100.00	100.00	100.00

Market Overview

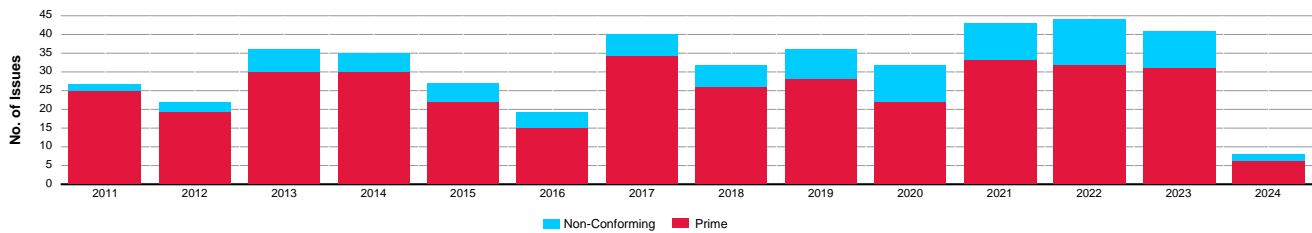
**S&P Global Ratings Rated New Issuance
Prime/ Non-Conforming (Mil. A\$)**



Amount (Mil. A\$)	2011	2012	2013	2014	2015	2016	2017	2018	2019	2020	2021	2022	2023	2024
Prime	22,320.13	14,425.51	29,403.95	31,157.58	25,739.61	12,305.66	31,624.70	19,165.30	26,924.80	16,798.30	29,245.67	27,200.30	26,497.37	8,050.00
Non-Conforming	330.00	900.00	1,813.07	1,727.45	2,220.75	2,425.74	3,103.73	6,029.10	5,903.11	6,655.40	9,290.58	6,998.14	7,950.00	2,000.00
Total	22,650.13	15,325.51	31,217.01	32,885.03	27,960.36	14,731.40	34,728.43	25,194.40	32,827.91	23,453.69	38,536.25	34,198.44	34,447.37	10,050.00

%	2011	2012	2013	2014	2015	2016	2017	2018	2019	2020	2021	2022	2023	2024
Prime	98.54	94.13	94.19	94.75	92.06	83.53	91.06	76.07	82.02	71.62	75.89	79.54	76.92	80.10
Non-Conforming	1.46	5.87	5.81	5.25	7.94	16.47	8.94	23.93	17.98	28.38	24.11	20.46	23.08	19.90
Total	100.00	100.00	100.00	100.00	100.00	100.00	100.00	100.00	100.00	100.00	100.00	100.00	100.00	100.00

**S&P Global Ratings Rated New Issuance
Prime/ Non-Conforming (No. of Issues)**



No. of Transactions	2011	2012	2013	2014	2015	2016	2017	2018	2019	2020	2021	2022	2023	2024
Prime	25	19	30	30	22	15	34	26	28	22	33	32	31	6
Non- Conforming	2	3	6	5	5	4	6	6	8	10	10	12	10	2
Total	27	22	36	35	27	19	40	32	36	32	43	44	41	8

%	2011	2012	2013	2014	2015	2016	2017	2018	2019	2020	2021	2022	2023	2024
Prime	92.59	86.36	83.33	85.71	81.48	78.95	85.00	81.25	77.78	68.75	76.74	72.73	75.61	75.00
Non- Conforming	7.41	13.64	16.67	14.29	18.52	21.05	15.00	18.75	22.22	31.25	23.26	27.27	24.39	25.00
Total	100.00	100.00	100.00	100.00	100.00	100.00	100.00	100.00	100.00	100.00	100.00	100.00	100.00	100.00

Sponsor Classifications

The classifications into major bank, regional bank, nonbank financial institution, other bank, and nonbank originator are based on the predominant source of origination within the securitization pools.

Following a review of Sponsor classifications, we have reclassified certain sponsors from March 31, 2024.

Major Bank

Advantaged Financial Services Pty Ltd
Commonwealth Bank of Australia Ltd.

Westpac Banking Corp.
National Australia Bank Ltd.

Regional Bank

Bank of Queensland Ltd.
Bendigo and Adelaide Bank Ltd.

Suncorp-Metway Ltd
Members Equity Bank Pty Ltd.

Other Bank

AMP Bank Ltd.
Arab Bank Australia Ltd.
Auswide Bank Ltd.
Citigroup Pty Ltd.
Heritage Bank Ltd.
Police & Nurses Limited
Police Financial Services Limited.
Hume Bank Ltd.
Regional Australia Bank Ltd.
HSBC Bank Australia Ltd.

IMB Ltd.
ING Bank (Australia) Ltd.
Macquarie Bank Ltd.
MyState Bank Ltd.
Beyond Bank Australia Ltd.
B&E Ltd.
Gateway Bank Ltd.
Maitland Mutual Ltd.
Australian Unity Bank Ltd.

Nonbank Financial Institution (NBFI)

Australian Central Credit Union Ltd.
Queensland Country Credit Union Ltd.
Credit Union Australia Ltd.
Cuscal Ltd.
Southern Cross Credit Union.
Credit Union SA Ltd.

Newcastle Permanent Building Society Ltd.
Police Credit Union Ltd.
QPCU Ltd.
Illawarra Credit Union Ltd.
Summerland Financial Services Ltd.

Nonbank Originator

AIMS Home Loans Pty Ltd.
Challenger Mortgage Management Pty Ltd
Columbus Capital Pty Ltd.
Sintex Consolidated Pty Ltd.
Homeloans Ltd.
Resimac Ltd.
Brighten Home Loans Pty Ltd.
AFG Securities Pty Ltd.
Athena Mortgage Pty Limited

Bluestone Mortgages Pty Ltd.
FirstMac Ltd.
Fox Symes Home Loans (Services) Pty Ltd.
Pepper HomeLoans Pty Ltd.
RHG Home Loans Pty Ltd.
La Trobe Financial Services Pty Ltd.
Mortgage House of Australia Pty Ltd.
BC Securities Pty Ltd.

Rankings

Structured Finance Rankings

	Ranking/Outlook
Residential Loan Servicer	
Bluestone Servicing Pty. Ltd.	Strong/Stable
Bluestone Servicing NZ Ltd.	Strong/Stable
FirstMac Ltd.	Strong/Stable
IMB Ltd.	Strong/Stable
Liberty Group Ltd.	Strong/Stable
Pepper Money Ltd.	Strong/Stable
Resimac Ltd.	Strong/Stable
La Trobe Financial Services Pty Ltd.	Strong/Stable
Residential Non-Conforming Loan Servicer	
Bluestone Servicing Pty Ltd.	Strong/Stable
Bluestone Servicing NZ Ltd.	Strong/Stable
Liberty Group Ltd.	Strong/Stable
Pepper Money Ltd.	Strong/Stable
La Trobe Financial Services Pty Ltd.	Strong/Stable
Resimac Ltd.	Strong/Stable

Rankings as of March 31, 2024 A ranking may change at any time, for current rankings please refer to www.capitaliq.com.

Descriptions

About this Publication

Australian RMBS Performance Watch is a quarterly review of the performance of residential mortgage pools that collateralize Australian term securities. If you or your colleagues would like to receive a copy of Australian RMBS Performance Watch, please visit www.sfsurveillance.com.au or contact S&P Global Ratings Client Services on (61) 1300-732-553 or by e-mail at: clientservices_pacific@spglobal.com.

Comparative Pool Characteristics

We have calculated comparative pool statistics using outstanding loan balances. All data are provided as of or as near as possible to March 31, 2024, unless otherwise stated.

Data Collection

To allow the timely delivery of information to the market, we do not include in the Australian RMBS Performance Watch statistics any data that are not received by the 15th day after the end of a quarter. Any late data will be included in updated statistics and subsequent publications.

Definitions

S&P Global Ratings has compiled the information in this publication using information received from the issuer, manager, or servicer of each program. S&P Global Ratings has endeavored to provide data on a basis that is comparable among programs. However, users of the information in this publication should exercise caution because there may be inconsistencies in the way that each of the programs is reported to S&P Global Ratings. The descriptions below highlight how S&P Global Ratings interprets general terminology; they are not intended to be industry-standard definitions.

10 Worst-Performing Postcodes

For the purpose of this analysis, we have excluded postcodes with fewer than 250 loans. In line with our RMBS Rating Methodology and Assumptions, the archetypical pool, which underpins our credit analysis, is comprised of at least 250 consolidated Australian residential mortgage loans because our analysis suggests that a pool of this size is statistically valid. Our parameters for the 10 worst-performing postcodes therefore are consistent with this assumption.

Annualized Quarterly Prepayment Rate

We calculate the annualized QPR by compounding the rate using the following formula: $1 - (1 - \text{QPR})^4$

Annualized Quarterly Repayment Rate

We calculate the annualized QRR by compounding the rate using the following formula: $1 - (1 - \text{QRR})^4$

Australian Prime Full-Doc SPIN

The Australian prime full-doc SPIN is a measure of arrears on full-doc residential mortgage loans underlying Australian prime RMBS transactions, both publicly and privately rated by S&P Global Ratings.

Australian Prime Low-Doc SPIN

The Australian prime low-doc SPIN is a measure of arrears on low-doc residential mortgage loans underlying Australian prime RMBS transactions, both publicly and privately rated by S&P Global Ratings.

Australian Prime SPIN

The Australian prime SPIN is a measure of arrears on residential mortgage loans underlying Australian prime RMBS transactions, both publicly and privately rated by S&P Global Ratings.

Australian Prime SPPI

The Australian prime SPPI is a measure of prepayment rates on residential mortgage loans underlying Australian prime RMBS transactions, both publicly and privately rated by S&P Global Ratings.

Australian Subprime SPIN

The Australian subprime SPIN is a measure of arrears on residential mortgage loans underlying Australian subprime RMBS transactions, both publicly and privately rated by S&P Global Ratings.

Australian Subprime SPPI

The Australian subprime SPPI is a measure of prepayment rates on residential mortgage loans underlying Australian subprime RMBS transactions, both publicly and privately rated by S&P Global Ratings.

Cumulative Gross Losses

Cumulative gross losses refer to the aggregate amount of losses in a pool of mortgage loans after recognizing the proceeds from the sale of the underlying security properties, but before including other loss support, such as claims paid under lenders' mortgage insurance policies or the application of excess spread. The cumulative gross loss percentage is expressed as a percentage of Australian dollar equivalent note balance, including further issuances from the same transaction at a later date. Warehouses are excluded from this calculation.

Domestic, Global, And Euro

We determine the categorization of an RMBS transaction by market by the legislation under which the notes are offered and the stock exchanges on which the notes are listed. Transactions with a securities and exchange commission (SEC)-registered or 144A tranche are classified as “global.” Transactions that are not global, but which are Euroclear- and/or Clearstream-settled and have a tranche listed on a European exchange, are classified as “euro.” All other transactions generally will be classified as “domestic.”

Full–Documentation Loans

A full-doc loan is a loan for which the borrower's income has been fully verified by the lender through reference to relevant source documents, such as paystips or tax returns.

Lenders' Mortgage Insurance (LMI)

The lenders' mortgage insurers distribution graphs display only those mortgage insurers that provide mortgage insurance for 1% or more of the pool. For a more detailed breakdown of mortgage insurer distribution, refer to the Lenders' Mortgage Insurers Distribution table in part 2 of this publication. The mortgage insurer short-names used in the pie charts are as listed in the table below.

Mortgage Insurer Short-Names Used In Charts

LMI	Short Name	Public Rating
HLIC (guaranteed by Commonwealth of Australia)	Comm. of Australia	AAA/Stable
Helia Insurance Pty Ltd.	Helia	A/Stable
QBE Lenders Mortgage Insurance Ltd.*	QBE LMI	A+/Stable
Arch Lenders Mortgage Indemnity Ltd	Arch LMI'	A/Stable
Prime Insurance Group Ltd. (reinsured with AIA International Ltd.)	AIA Int	AA-/Stable

*QBE Lenders Mortgage Insurance was formerly known as PMI Mortgage Insurance Ltd. **NR--Not rated. § Westpac Lenders Mortgage Insurance Ltd includes the former St George Insurance Australia Pty Ltd. Ratings at March 2024. A rating may change at any time, for current ratings please refer to www.standardandpoors.com.au.

Low-Documentation Loans

A low-doc loan is a loan for which the borrower's income has not been fully verified by the lender. Low-doc loans are often referred to by a variety of terms, including self-certified and stated income loans.

Missed-Payments Basis

The measurement of arrears on a missed-payments basis means that a loan is in arrears when a scheduled payment is missed, despite the fact that the borrower may be ahead of the scheduled payment curve.

Mortgage Arrears Data

The mortgage arrears data depict the proportionate value of loans 31-60 days, 61-90 days, and 90+ days in arrears. We calculate the percentages using the outstanding balance of loans in arrears as a proportion of the aggregate outstanding balance of total loans at the end of each month. We note the reporting method used by issuers in reporting arrears (scheduled-balance basis or missed-payments basis) on the loan pool arrears performance graph for each transaction.

Non-Conforming Loans

Non-Conforming loans are residential mortgage loans that would not typically qualify for a loan from a traditional prime lender and are generally not eligible to be covered by lenders' mortgage insurance from a nonassociated mortgage insurer. Non-Conforming loans may include LoDoc loans and subprime loans.

Note Balances

All note balances are based on invested amounts. The term "note" refers to a note, bond, security, or any other instrument issued by the issuer.

Prime

Prime loans are residential mortgage loans that generally would be made by traditional residential-mortgage lenders in the Australian market and usually would be eligible to be covered by a primary lenders' mortgage insurance policy from a nonassociated and rated mortgage insurer. Prime loans are usually to borrowers with clean credit histories, though some pools may include a small percentage of loans of a minor nonconforming nature. Prime loans can include low-documentation (low-doc) loans.

Quarterly Prepayment Rate

We calculate the QPR using the following formula:

$$O + \frac{U - R - F}{2} - I$$

Where:

U = unscheduled principal repayments

R = redraws

F = further advances

O = mortgage pool balance at the beginning of the quarter

S = loans added during a substitution period

P = loans added during a prefunding period

I = capitalized interest

Quarterly Repayment Rate

We calculate the quarterly repayment rate (QRR) using the following formula:

$$\frac{(Sc+U) - R - F}{O + \frac{(S+P)}{2} - I}$$

Where:

Sc = scheduled principal repayments

U = unscheduled principal repayments

R = redraws

F = further advances

O = mortgage pool balance at the start of the quarter

S = loans added during a substitution period

P = loans added during a prefunding period

I = capitalized interest

Scheduled-Balance Basis

The measurement of arrears on a scheduled-balance basis means that a loan is in arrears when the current loan balance less the scheduled loan balance is a positive number.

Sponsor

The sponsor is the party that has the primary commercial or beneficial interest in the residential mortgage-backed securities (RMBS) transaction.

S&P Global Ratings Performance Index

S&P Global Ratings Performance Index (SPIN) is a measure of arrears on residential mortgage loans underlying RMBS transactions, both publicly and privately rated by S&P Global Ratings. We calculate the SPIN for Australian prime and subprime asset classes, as well as Australian prime low-doc and prime full-doc loans. It is the weighted-average balance of loans in arrears in each of the 31-60 days, 61-90 days, and 90+ day categories. We calculate the SPIN on a monthly basis from information provided to us for each transaction.

S&P Global Ratings Prepayment Index

S&P Global Ratings Prepayment Index (SPPI) is a measure of prepayment rates on residential mortgage loans underlying RMBS transactions, both publicly and privately rated by S&P Global Ratings. We calculate the SPPI for Australian prime and subprime loans. It is the weighted-average of the annualized quarterly prepayment rates (QPRs) across the asset subclass. We calculate the SPPI monthly from information provided to us for each transaction.

Subprime

Subprime loans are loans to borrowers with adverse credit histories.

Total Current Loan Balance

The total current loan balance (TCLB) is the outstanding dollar amount of the underlying loans as of the report date.

Contacts

Key RMBS Analytical Contacts

Kate Thomson, Analytical Manager | Melbourne | + 61 3 9631 2104 | kate.thomson@spglobal.com

Narelle Coneybeare, Sector Lead | Sydney | + 61 2 9255 9838 | narelle.coneybeare@spglobal.com

Erin Kitson, Sector Specialist Research | Melbourne | + 61 3 9631 2166 | erin.kitson@spglobal.com

Analytical Team

Alisha Treacy | Melbourne | + 61 3 9631 2182 | alisha.treacy@spglobal.com

Calvin Leong | Melbourne | + 61 3 9631 2142 | calvin.leong@spglobal.com

Fiona Otway | Melbourne | + 61 3 9631 2060 | fiona.otway@spglobal.com

Elizabeth Steenson | Melbourne | + 61 3 9631 2162 | elizabeth.steenson@spglobal.com

Mei Lee Da Silva | Melbourne | + 61 3 9631 2053 | mei.dasilva@spglobal.com

Paul Prajogo | Melbourne | + 61 3 9631 2069 | paul.prajogo@spglobal.com

Justin Rockman | Melbourne | + 61 3 9631 2183 | justin.rockman@spglobal.com

Leslie Wong | Melbourne | + 61 3 9631 2932 | leslie.wong@spglobal.com

James Page | Sydney | + 61 2 2925 9847 | james.page@spglobal.com

Mabel Wong | Melbourne | + 61 3 9631 2124 | mabel.wong@spglobal.com

Mallika Khare | Melbourne | + 61 3 9631 2135 | mallika.khare@spglobal.com

Rohan Libbis | Melbourne | + 61 3 9631 2172 | rohan.libbis@spglobal.com

Michelle Hsiung | Melbourne | + 61 3 9631 2111 | michelle.hsiung@spglobal.com

Under S&P Global Ratings' policies, only a Rating Committee can determine a Credit Rating Action (including a Credit Rating change, affirmation or withdrawal, Rating Outlook change, or CreditWatch action). This commentary and its subject matter have not been the subject of a Rating Committee action and should not be interpreted as a change to, or affirmation of, a Credit Rating or Rating Outlook.

No content (including ratings, credit-related analyses and data, valuations, model, software or other application or output therefrom) or any part thereof (Content) may be modified, reverse engineered, reproduced or distributed in any form by any means, or stored in a database or retrieval system, without the prior written permission of Standard & Poor's Financial Services LLC or its affiliates (collectively, S&P). The Content shall not be used for any unlawful or unauthorized purposes. S&P and any third-party providers, as well as their directors, officers, shareholders, employees or agents (collectively S&P Parties) do not guarantee the accuracy, completeness, timeliness or availability of the Content. S&P Parties are not responsible for any errors or omissions (negligent or otherwise), regardless of the cause, for the results obtained from the use of the Content, or for the security or maintenance of any data input by the user. The Content is provided on an "as is" basis. S&P PARTIES DISCLAIM ANY AND ALL EXPRESS OR IMPLIED WARRANTIES, INCLUDING, BUT NOT LIMITED TO, ANY WARRANTIES OF MERCHANTABILITY OR FITNESS FOR A PARTICULAR PURPOSE OR USE, FREEDOM FROM BUGS, SOFTWARE ERRORS OR DEFECTS, THAT THE CONTENT'S FUNCTIONING WILL BE UNINTERRUPTED OR THAT THE CONTENT WILL OPERATE WITH ANY SOFTWARE OR HARDWARE CONFIGURATION. In no event shall S&P Parties be liable to any party for any direct, indirect, incidental, exemplary, compensatory, punitive, special or consequential damages, costs, expenses, legal fees, or losses (including, without limitation, lost income or lost profits and opportunity costs or losses caused by negligence) in connection with any use of the Content even if advised of the possibility of such damages.

Credit-related and other analyses, including ratings, and statements in the Content are statements of opinion as of the date they are expressed and not statements of fact. S&P's opinions, analyses and rating acknowledgment decisions (described below) are not recommendations to purchase, hold, or sell any securities or to make any investment decisions, and do not address the suitability of any security. S&P assumes no obligation to update the Content following publication in any form or format. The Content should not be relied on and is not a substitute for the skill, judgment and experience of the user, its management, employees, advisors and/or clients when making investment and other business decisions. S&P does not act as a fiduciary or an investment advisor except where registered as such. While S&P has obtained information from sources it believes to be reliable, S&P does not perform an audit and undertakes no duty of due diligence or independent verification of any information it receives.

To the extent that regulatory authorities allow a rating agency to acknowledge in one jurisdiction a rating issued in another jurisdiction for certain regulatory purposes, S&P reserves the right to assign, withdraw or suspend such acknowledgement at any time and in its sole discretion. S&P Parties disclaim any duty whatsoever arising out of the assignment, withdrawal or suspension of an acknowledgment as well as any liability for any damage alleged to have been suffered on account thereof.

S&P keeps certain activities of its business units separate from each other in order to preserve the independence and objectivity of their respective activities. As a result, certain business units of S&P may have information that is not available to other S&P business units. S&P has established policies and procedures to maintain the confidentiality of certain non-public information received in connection with each analytical process.

S&P may receive compensation for its ratings and certain analyses, normally from issuers or underwriters of securities or from obligors. S&P reserves the right to disseminate its opinions and analyses. S&P's public ratings and analyses are made available on its Web sites, www.standardandpoors.com (free of charge), and www.ratingsdirect.com and www.globalcreditportal.com (subscription), and may be distributed through other means, including via S&P publications and third-party redistributors. Additional information about our ratings fees is available at www.standardandpoors.com/usratingsfees.

Permissions: To reprint, translate, or quote S&P Global Ratings' publications, contact Client Services, 101 Collins Street, Melbourne, Vic 3000 Australia, (61) 1300-792-553.

This report and the ratings contained within it are based on published information as of March 31, 2024. Subsequent information may result in the assignment of ratings that differ from the ratings published here. Please call Standard & Poor's Client Services at (61) 1300-792-553 for the most recent rating assigned.

For Australian Users—S&P Global Ratings Australia Pty Ltd_ holds Australian financial services licence number 337565 under the Corporations Act 2001. Standard & Poor's credit ratings and related research are not intended for and must not be distributed to any person in Australia other than a wholesale client (as defined in Chapter 7 of the Corporations Act).

S&P Global Ratings 17g-7 Disclosure Report

SEC Rule 17g-7 requires an NRSRO, for any report accompanying a credit rating relating to an asset-backed security as defined in the Rule, to include a description of the representations, warranties and enforcement mechanisms available to investors and a description of how they differ from the representations, warranties and enforcement mechanisms in issuances of similar securities. The Rule applies to in-scope securities initially rated (including preliminary ratings) on or after Sept. 26, 2011.

Copyright © 2024 by Standard & Poor's Financial Services LLC. All rights reserved.
STANDARD & POOR'S, S&P and RATINGSDIRECT are registered trademarks of Standard & Poor's Financial Services LLC.

Reproduction in whole or in part prohibited except by permission.

