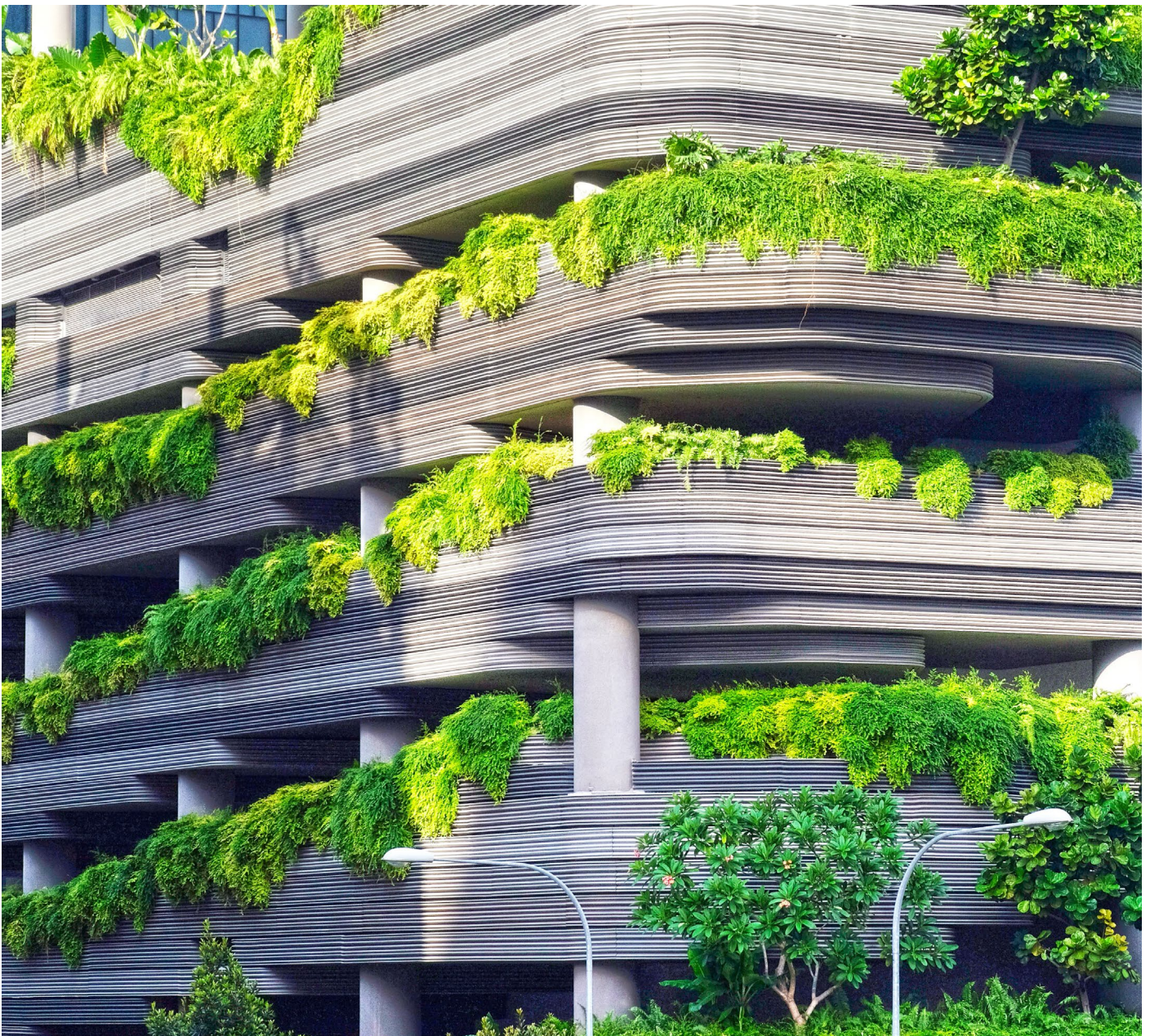


Benchmarking Database





Contents

Benchmarking Database (BDB) Licenses Overview	03
BDB Showcase	05
BDB Service Options	09

The BDB is a convenient online tool that empowers you to conduct a detailed quantitative benchmarking analysis of your S&P Global Corporate Sustainability Assessment (CSA) results. It supports your communication with multi-year trend analysis and charts. Create a competitive spirit among all departments involved in the CSA and fully understand your results when engaging with stakeholders and shareholders.

BDB Basic — Powerful functionality at your fingertips.

This free version provides access to key functionalities: **Analyze - Filter - Export.**

Analysis functions

Total score, dimension and criteria level

- Your CSA scores, together with the average and best scores in your industry, for the last four years (if available).
- Year-on-year comparison of your score and percentile rank down to criteria level.
- The weighted gap column shows you how closing the score gap between your company and the best company in your industry would impact your total score.

Total score and dimension level

- Results of the top five companies in your industry as well as your four closest competitors at total score and dimension score level, for the last four years (if available).
- Trend analysis of up to four years including a graphical representation of your company score against the industry.

Filter options

Basic filters including base year, score date, plus search function enable the companies to have a better overview of your and your customized peer group's performance development

Report Exporting

- My company's scorecard: an editable XLS sheet to show scores and online available statistics down to criteria level
- My company's question scores: an editable XLS sheet has the score down to question level

BDB Starter — Comprehensive benchmarking down to question level.

All functionalities of BDB Basic and on total score, dimension, criteria and question level: **Analyze - Filter - Export.**

Analysis functions

- Results table includes full list of companies.
- Trend analysis charts of your results against industry peers even in question level.
- Understand your company performance and that of your industry peers on all score levels.

Filter Options

Upgraded filters including geographic regions, and company's listing status.

Report Exporting

My company's scorecard export with regional filter applied.

BDB Expert — Conduct highly customized benchmarking to gain additional insights.

The BDB Expert package allows you to assess your performance against any company. Even those outside of your own industry. You can benchmark against a whole different industry or even create a customized peer group made up of companies from any industry. With more advanced filters allows companies to directly export trend chart and peer score analysis for your benchmarking purpose.

This includes all functionalities of the Starter level plus more features in **Analyze - Filter - Export**.

Analysis functions

- Potential impact of closing all gaps on total score, down to question level. Additional statistical insights to help you prioritize improvement areas.
- Your performance as a percentage compared to the best company.

Filter Options

- Flexible Peer group construction of industries, regions, index eligibility, company's listing status, and index memberships.
- Customized peer groups including companies outside your own industry.

Report Exporting

- Export trend chart (PNG format), Peer score analysis and Results table (XLS format).



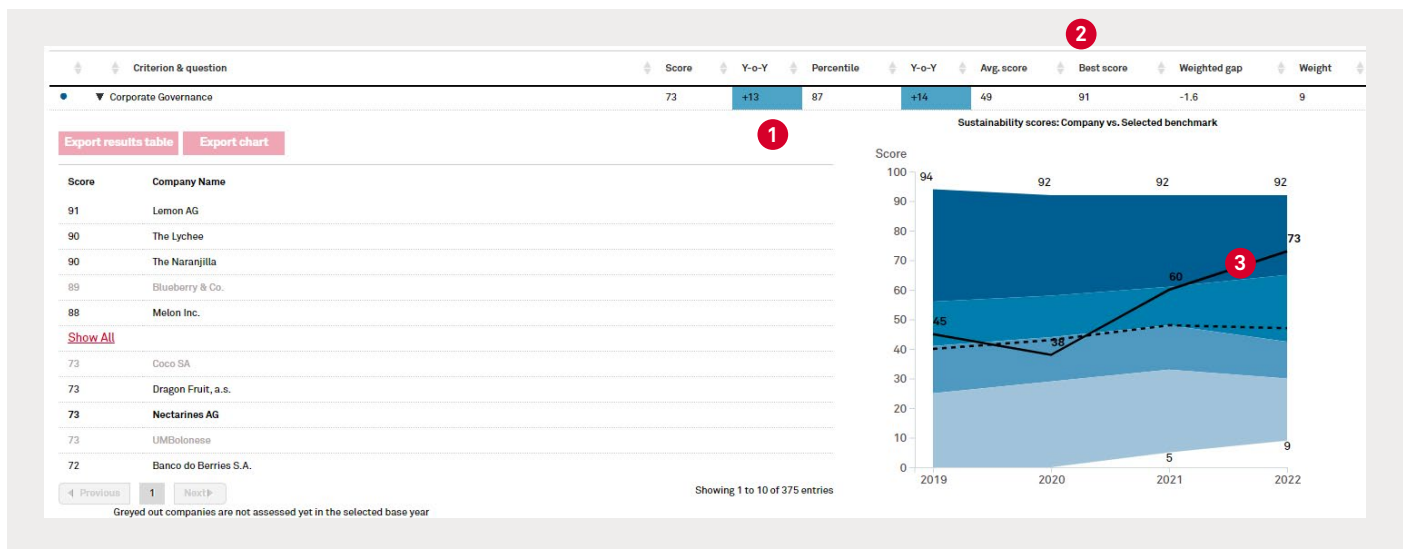
Upgrade your BDB package to gain in-depth insights into your company's performance so that you can provide more comprehensive feedback to subject matter experts and management in your company and effectively communicate your performance to external stakeholders.

Sample Benchmarking Analysis: BDB Basic vs. BDB Starter

If you worked for this sample company, using the BDB Basic functionality you will find out that your company's performance in Corporate Governance improved greatly year over year ([1] score +13, percentile rank +14). But still, the gap to best score in your industry is substantial, given that the best score [2] in the peer group is 91 points.

BDB Starter will allow you to provide a more detailed feedback: Your company is shown relative to its peers in the trend chart. Company's performance has been improving for past 3 years. [3] Your company (black line) no longer scores in the second quartile but reached the top 25% (darkest area) in your industry.

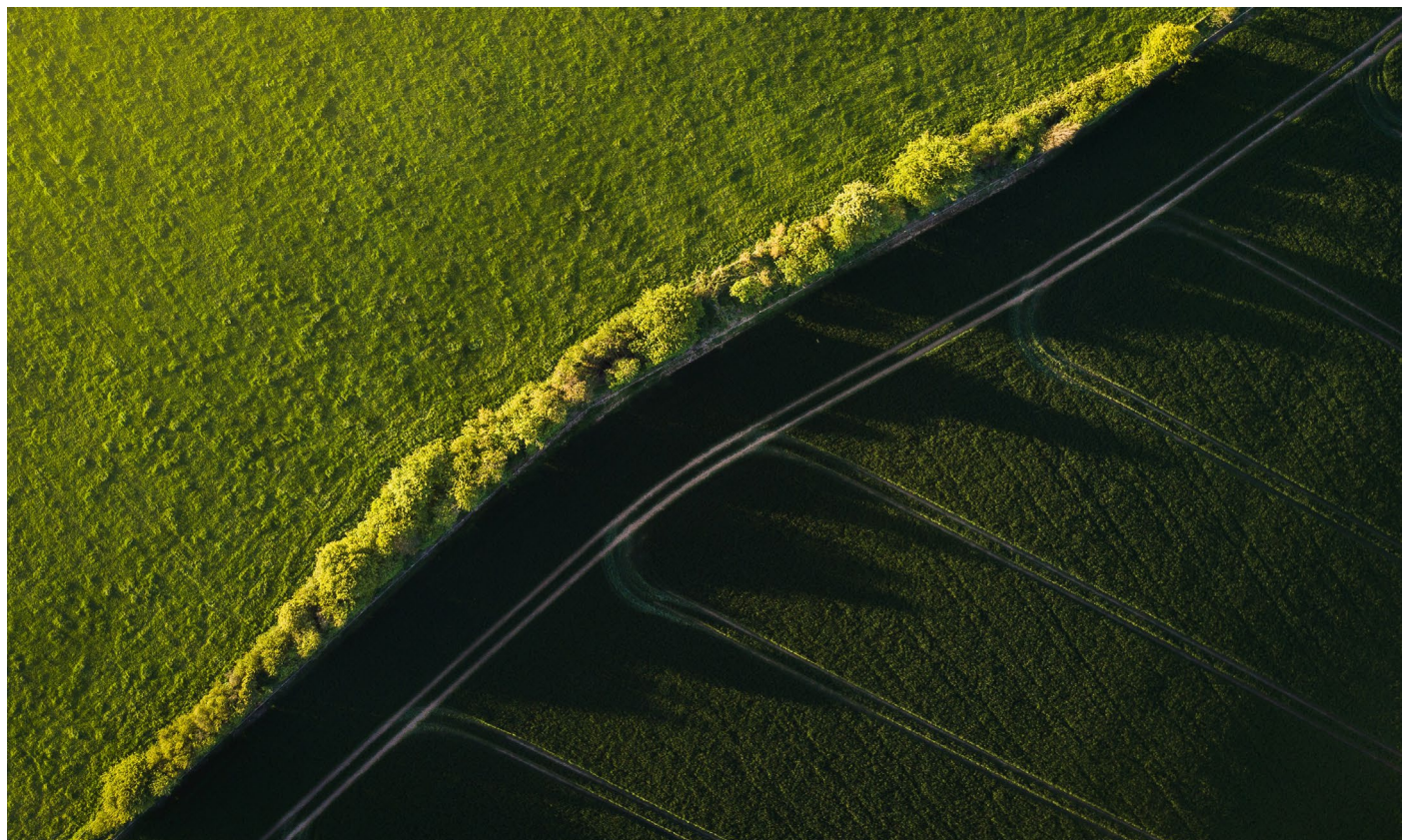
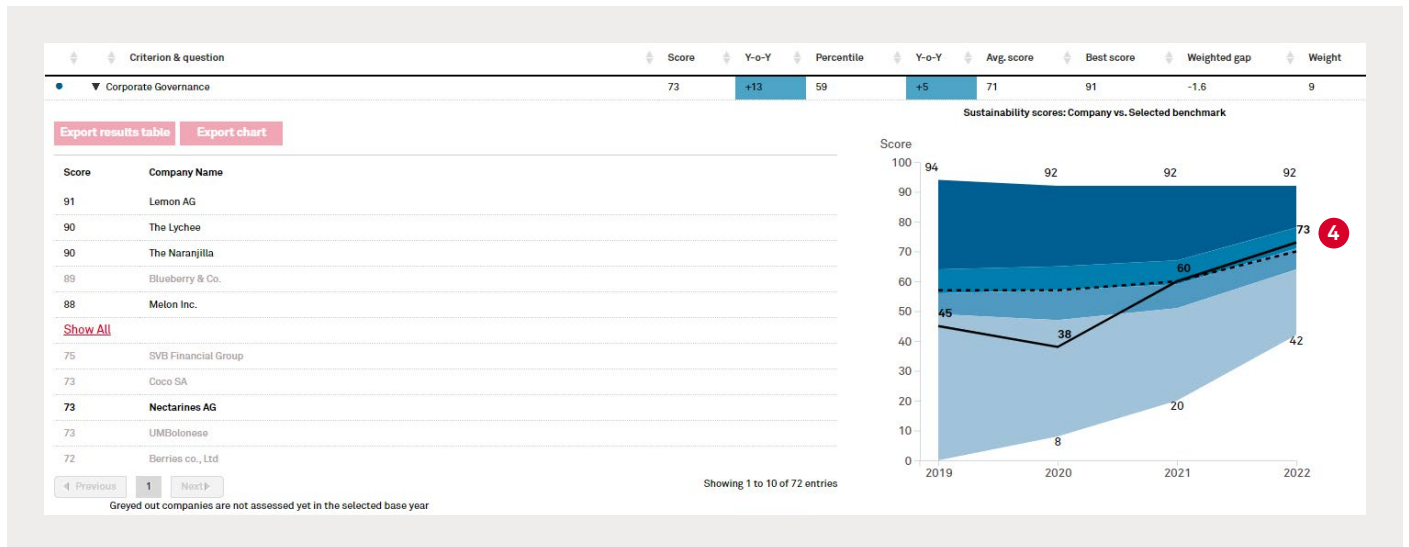
Screenshot: BDB Starter — Your company vs. your industry



By setting the regional filter available to you in the BDB Starter package to your region only, you see that the region has a particularly strong general performance

in this criterion, which is also illustrated by the fact that the company has dropped from the top quartile [4].

Screenshot: BDB Starter — Your company vs. any region



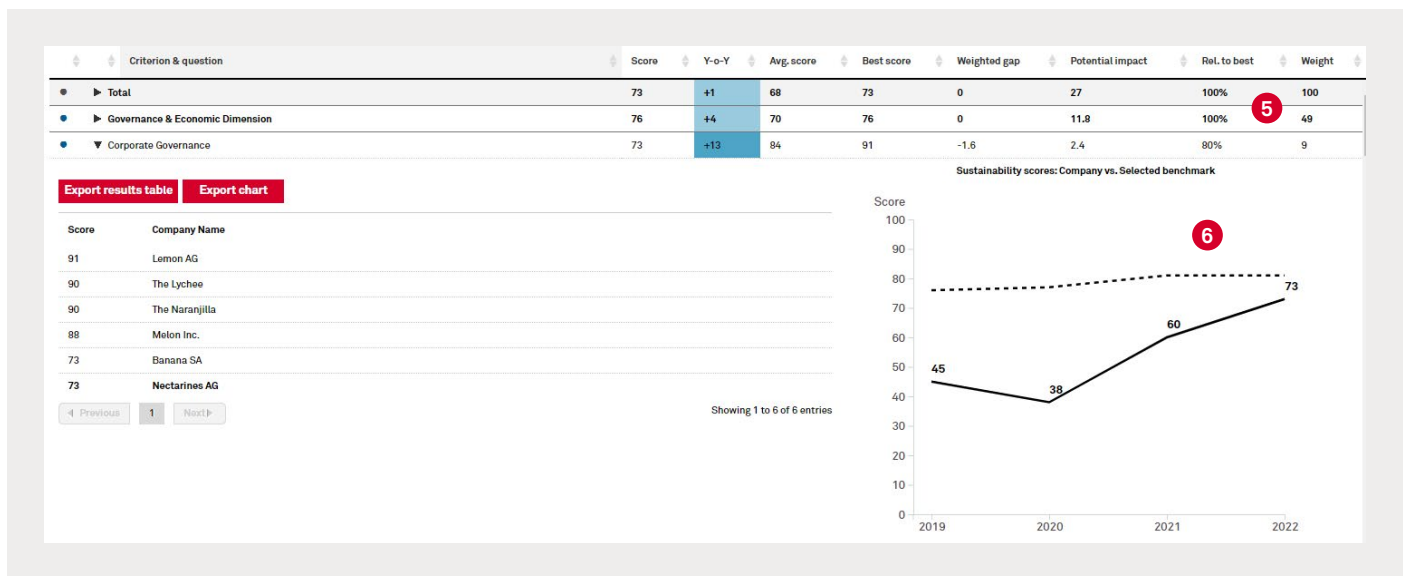
Upgrade to BDB Expert to benchmark your performance against customized peer groups that are most relevant to your company’s management, subject matter experts, and external stakeholders.

Sample Benchmarking Analysis: BDB Expert

This example uses a customized peer group with companies manually selected from your own and other industries. This inter-industry comparison works best for general criteria like Corporate Governance. Looking at the BDB Expert screenshot, you can see that company’s relative performance [5] is 100%, indicating that the company has achieved the highest score among its close competitors.

Let’s look at the Corporate Governance criterion, where the company has made continuous improvements over the last 3 years. The chart reveals that the average performance [6] of the customized peer group has also slightly improved over the years, and the company has managed to slowly close the gap to the average score. But when we check the “relative to best”, the performance is 80%, which indicates that the best performer in the peer group scored higher on this criterion.

Screenshot: BDB Expert — Your company vs. a customized peer group



With the powerful filter options upgrading, you have more possibilities to benchmark with your desired group. Let's navigate to the DJSI Eligible Universe filter [7] and select a relevant index--DJSI World 2500 for BNK Industry.

You can see that the company managed to outperform DJSI World 2500 in the Banks (BNK) industry in Corporate

Governance and can now be found in the 1st quartile [8].

When you find relevant statistics for your presentation, you can export this information by clicking "Export scores" or "Export results table". The trend chart is also exportable by one click [9].

Screenshot: BDB Expert — Your company vs. any industry

The screenshot displays the BDB Expert interface. At the top, there are filter options for 'Regions & Countries', 'Index eligibility' (set to 'World 2500'), 'Index membership', and 'Listing Status' (set to 'Listed'). A dropdown menu for 'Industry / Peer group' is open, showing various indices like 'Emerging Markets 800', 'Europe 600', 'Korea 200', 'MILA 150', 'North America 600', 'World 2500', and 'S&P ESG Indices Eligible'. A red circle '7' highlights the 'World 2500' selection. Below the filters, there are buttons for 'Export Scores' and 'Hide question'. A table below shows scores for 'Total', 'Governance & Economic', and 'Corporate Governance'. A red circle '9' highlights the 'Export Scores' button. Below the table, there are buttons for 'Export results table' and 'Export chart'. A red circle '9' highlights the 'Export chart' button. To the right, a trend chart titled 'Sustainability scores: Company vs. Selected benchmark' shows scores from 2019 to 2022. A red circle '8' highlights the chart. The chart shows a solid line for the company's score and a dashed line for the benchmark. The company's score starts at 45 in 2019, drops to 38 in 2020, rises to 60 in 2021, and reaches 73 in 2022. The benchmark score starts at 94 in 2019, drops to 92 in 2020, rises to 92 in 2021, and reaches 92 in 2022. The chart also shows a shaded area representing the range of scores for the selected benchmark.

	Score	Y-o-Y	Percentile	Y-o-Y	Avg. score	Best score	Weighted gap	Potential impact	Rel. to best	Weight
Total	73	+1	98	+4	33	89	-16	27	92%	100
Governance & Economic	76	+4	99	+4	36	86	-4.9	11.8	88%	49
Corporate Governance	73	+13	87	+14	49	91	-1.6	2.4	80%	9

Choose the database subscription that best meets your needs:

Benchmarking Database	BDB Basic	BDB Starter	BDB Expert
Parameters Available			
Score			
Average Score	Total, dimension, criteria and question		
Best Score			
Score Change Year Over Year (Y-O-Y)			
Percentile	Total, dimension and criteria		
Percentile Change Year Over Year (Y-O-Y)			
Weighted Gap To Best Performing Company (Score Gap Multiplied by Weight)			
Weight	Total, dimension and criteria		Total, dimension, criteria and question
Potential Impact on Total Score if All Gaps Are Closed	Get an upgrade for this functionality		
Relative To Best Score in %	Get an upgrade for this functionality		
Results Table Including Score and Company Name	Total and dimension (limited to top 5 companies as well as 4 closest competitors)	Total, dimension, criteria and question (all companies with any applicable filter applied)	
4-Year Trend Analysis Chart of Your Company vs. Your Selected Benchmark	Total and dimension	Total, dimension, criteria and question (if available)	
Filter Applicable to Above Parameters			
Assessment Year	✓	✓	✓
Score Date	✓	✓	✓
Search Functionality	✓	✓	✓
Regions and Countries	Get an upgrade for this functionality	✓	✓
Company's listing status	Get an upgrade for this functionality	✓	✓
Index eligibility			✓
Index Membership	Get an upgrade for this functionality		✓
Industries			✓
Customized Peer Group			✓
Export My company's question scores as XLS File	✓	✓	✓
Export My company's scorecard as XLS File	Standard	With any regional filter applied	In selected peer group with any filter applied
Export Results Table as XLS File			✓
Export Peer's question scores	Get an upgrade for this functionality		✓
Export trend chart in picture format (PNG)			✓

How do I access the database?

Access to the Benchmarking Database is only available to companies assessed in the S&P Global Corporate Sustainability Assessment (CSA). The database can be accessed after registering on the CSA Portal. You can register or log in to your company's account by visiting portal.csa.spglobal.com/survey.

Access is provided to the latest assessment year data and, where available, historical data. Database access expires a year after it is granted.

What if I purchase other services?

Upgrade from BDB Starter to BDB Expert at a reduced fee. BDB Expert access is provided free of charge with any order of a Company Benchmarking Report (CBR). Fees already paid for the BDB access will be deducted from any CBR fee ordered for the same assessment year.

100% Money Back Guarantee

Put us to the test! We offer a "10-Day Money-Back Guarantee" to ensure you are satisfied with this service. If for any reason you wish to discontinue using the service, simply notify us within 10 days after access is granted.

S&P Global

[To learn more, contact us.](#)

Important legal information

All information, data or material, including ratings or scores (all such information, "Content"), contained in this report and other reports, materials, or websites of S&P Global Inc. and its subsidiaries is the exclusive property of S&P Global Inc. or its relevant subsidiary and may not be copied or reproduced in any form except with the prior written permission of S&P Global Inc. A reference to a particular investment or security, a score, rating or any observation concerning an investment or security that is part of the Content is not a recommendation to buy, sell or hold such investment or security, does not address the suitability of an investment or security and should not be relied on as investment advice. See additional Disclaimers at <https://www.spglobal.com/en/terms-of-use>.

Copyright© 2023 S&P Global Inc. All rights reserved.