

Local Government Investment Cooperative

Principal Stability Fund Ratings Definitions

AAAm A fund rated 'AAAm' demonstrates extremely strong capacity to maintain principal stability and to limit exposure to principal losses due to credit risk. 'AAAm' is the highest principal stability fund rating assigned by S&P Global Ratings

AAM A fund rated 'AAM' demonstrates very strong capacity to maintain principal stability and to limit exposure to principal losses due to credit risk. It differs from the highest-rated funds only to a small degree.

Am A fund rated 'Am' demonstrates strong capacity to maintain principal stability and to limit exposure to principal losses due to credit risk, but is somewhat more susceptible to the adverse effects of changes in circumstances and economic conditions than funds in higher-rated categories

BBBm A fund rated 'BBBm' demonstrates adequate capacity to maintain principal stability and to limit exposure to principal losses due to credit risk. However, adverse economic conditions or changing circumstances are more likely to lead to a reduced capacity to maintain principal stability.

BBm A fund rated 'BBm' demonstrates speculative characteristics and uncertain capacity to maintain principal stability. It is vulnerable to principal losses due to credit risk. While such funds will likely have some quality and protective characteristics, these may be outweighed by large uncertainties or major exposures to adverse conditions.

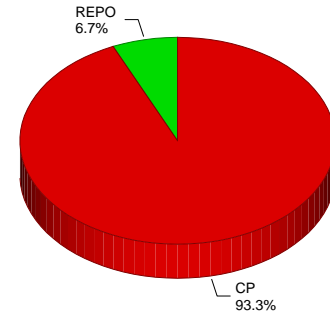
Dm A fund rated 'Dm' has failed to maintain principal stability resulting in a realized or unrealized loss of principal.

Plus (+) or Minus (-)
The ratings may be modified by the addition of a plus (+) or minus (-) sign to show relative standing within the rating categories.

About the Pool

Pool Rating	AAAm
Pool Type	Stable NAV Government Investment Pool
Investment Adviser	J.P. Morgan Investment Management, Inc.
Portfolio Manager	J.P. Morgan Asset Management – Global Liquidity Team
Pool Rated Since	February 2006
Custodian	JPMorgan Chase Bank N.A.
Distributor	Hilltop Securities Inc.

Portfolio Composition as of September 24, 2024



CP - Commercial Paper; REPO - Repurchase Agreement

Rationale

S&P Global rates Local Government Investment Cooperative (LOGIC) 'AAAm'. This is S&P Global's highest principal stability fund rating and is based on an analysis of the pool's investment portfolio and guidelines, market price exposure, and management. The rating signifies our forward-looking opinion about a fixed-income fund's ability to maintain principal value (i.e., stable net asset value, or 'NAV'). LOGIC has a conservative investment policy and invests in only authorized investments under the Texas Public Funds Investment Act. To ensure an accurate and current rating, S&P Global monitors pertinent pool information, including the fund's portfolio holdings, on a weekly basis.

Overview

LOGIC is a local government investment pool organized under the authority of the Interlocal Cooperation Act, chapter 791, of the Texas Government Code, and the Public Funds Investment Act, chapter 2256, of the Texas Government Code. The pool was created in April 1994 through a contract among its participating governmental units, and is governed by a board of directors (the board) to provide for the joint investments of participant's public funds and funds under their control. LOGIC's policy seeks to invest pooled assets in a manner that will provide for safety of principal, liquidity in accordance with the operating requirements of the Participants, and a competitive rate of return by utilizing economies of scale and professional investment expertise.

Management

Since September 2005, J.P. Morgan Investment Management Inc. (JPMIM) has served as investment adviser to LOGIC. JPMIM is an SEC registered investment adviser and an affiliate of J.P. Morgan Asset Management (JPMAM), which is the marketing name for the asset management business of JPMorgan Chase & Co. Hilltop Securities Inc. (Hilltop Securities) and JPMIM serve as co-administrators to LOGIC, and Hilltop Securities provides administrative, participant support, and marketing services. Hilltop Securities is a registered broker dealer, member of FINRA/SIPC, which provides financial advisory and investment banking services to governmental entities across the county. JPMorgan Chase Bank N.A. provides custodial services.

Portfolio Assets

LOGIC's investment objectives are to seek preservation of principal, liquidity, and current income through investment in a diversified portfolio of short-term marketable securities. The portfolio's maximum final stated maturity is 397 days for fixed-rate securities and 24 months for variable rate notes. The portfolio will maintain a dollar-weighted average maturity to reset (WAM(R)) that does not exceed 60 days and a dollar-weighted average to final maturity (WAM(F)) of 90 days or less. LOGIC may invest in securities including: certain obligations of the United States or its agencies and instrumentalities; repurchase agreements; and SEC-registered money-market funds rated in the highest rating category by at least one nationally recognized statistical rating organization (NRSRO). It can also invest in commercial paper (that is rated 'A-1' or 'P-1' or equivalent by two NRSROs or that is rated 'A-1' or 'P-1' or equivalent by one NRSRO and is fully secured by an irrevocable letter of credit issued by a bank organized and existing under the laws of the United States or any state).

S&P Global Ratings Analyst: Andrea Valverde - 212 438 7416

www.spratings.com

Participants should consider the investment objectives, risks and charges and expenses of the pool before investing. The investment guidelines which can be obtained from your broker-dealer, contain this and other information about the pool and should be read carefully before investing.

Principal Stability Rating Approach and Criteria

A S&P Global Ratings principal stability fund rating, also known as a "money market fund rating", is a forward-looking opinion about a fixed income fund's capacity to maintain stable principal (net asset value). When assigning a principal stability rating to a fund, S&P Global Ratings analysis focuses primarily on the creditworthiness of the fund's investments and counterparties, and also its investments' maturity structure and management's ability and policies to maintain the fund's stable net asset value. Principal stability fund ratings are assigned to funds that seek to maintain a stable or an accumulating net asset value.

Generally, when faced with an unanticipated level of redemption requests during periods of high market stress, the manager of any fund may suspend redemptions for up to five business days or meet redemption requests with payments in-kind in lieu of cash. A temporary suspension of redemptions or meeting redemption requests with distributions in-kind does not constitute a failure to maintain stable net asset values. However, higher rated funds are expected to have stronger capacities to pay investor redemptions in cash during times of high market stress because they generally comprise shorter maturity and higher quality investments.

Principal stability fund ratings, or money market fund ratings, are identified by the 'm' suffix (e.g., 'AAAm') to distinguish the principal stability rating from a S&P Global Ratings traditional issue or issuer credit rating. A traditional issue or issuer credit rating reflects S&P Global Ratings view of a borrower's ability to meet its financial obligations. Principal stability fund ratings are not commentaries on yield levels.

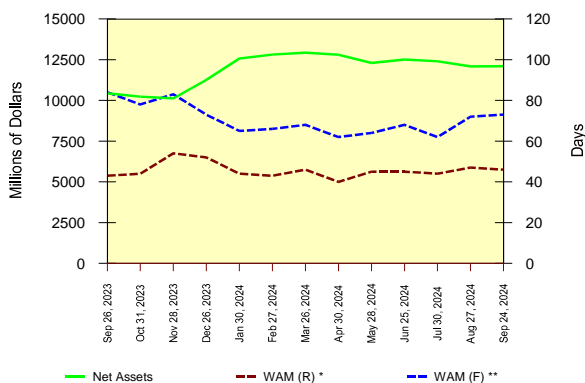
Local Government Investment Cooperative

AAAm

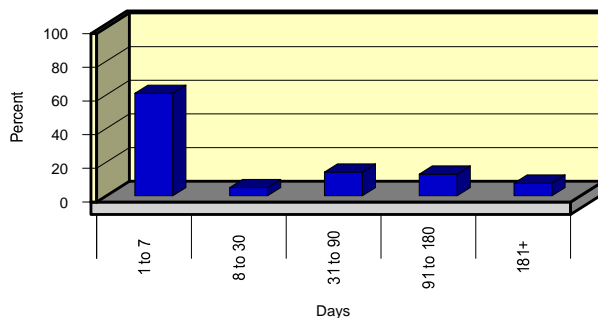
Data Bank as of September 24, 2024

Net Asset Value per Share.....	\$1.00067	Net Assets (millions).....	\$12,095.50	Inception Date.....	April 1994
WAM (R) *	46 days	WAM (F) **.....	73 days	7 Day Yield.....	5.13%
* Weighted Average Maturity (Reset)		** Weighted Average Maturity (Final)			

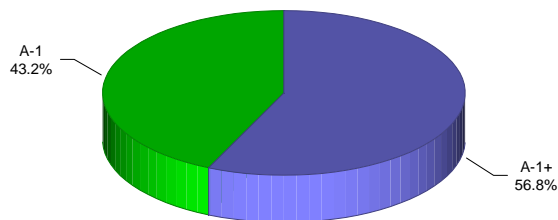
Net Assets, WAM (R) and WAM (F)



Portfolio Maturity Distribution as of September 24, 2024

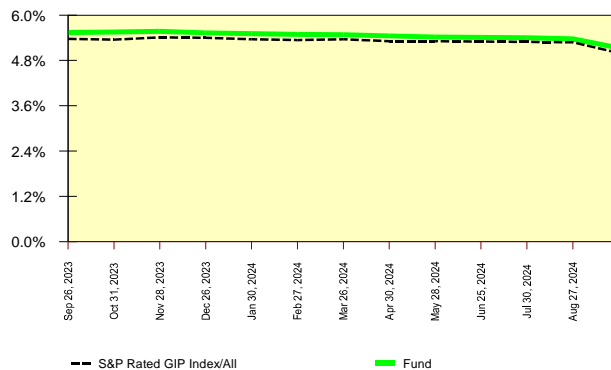


Portfolio Credit Quality as of September 24, 2024 *



*As assessed by S&P Global Ratings

Portfolio 7 Day Net-Yield Comparison *



*S&P 'AAAm' Money Fund Indices are calculated weekly by iMoneyNet, Inc., and are comprised of funds rated or assessed by S&P Global Ratings to within the specific rating categories. The S&P Global Ratings Rated LGIP Indices are calculated weekly by S&P Global Ratings and are comprised of 'AAAm' and 'AAm' government investment pools. *The yield quoted represents past performance. Past performance does not guarantee future results. Current yield may be lower or higher than the yield quoted.*

Pool portfolios are monitored weekly for developments that could cause changes in the ratings. Rating decisions are based on periodic meetings with senior pool executives and public information.

S&P Global Ratings is neither associated nor affiliated with the fund.

Copyright © 2024 by Standard & Poor's Financial Services LLC. All rights reserved. No content (including ratings, credit-related analyses and data, valuations, model, software or other application or output therefrom) or any part thereof (Content) may be modified, reverse engineered, reproduced or distributed in any form by any means, or stored in a database or retrieval system, without the prior written permission of Standard & Poor's Financial Services LLC or its affiliates (collectively, S&P). The Content shall not be used for any unlawful or unauthorized purposes. S&P and any third-party providers, as well as their directors, officers, shareholders, employees or agents (collectively S&P Parties) do not guarantee the accuracy, completeness, timeliness or availability of the Content. S&P Parties are not responsible for any errors or omissions (negligent or otherwise), regardless of the cause, for the results obtained from the use of the Content, or for the security or maintenance of any data input by the user. The Content is provided on an "as is" basis. S&P PARTIES DISCLAIM ANY AND ALL EXPRESS OR IMPLIED WARRANTIES, INCLUDING, BUT NOT LIMITED TO, ANY WARRANTIES OF MERCHANTABILITY OR FITNESS FOR A PARTICULAR PURPOSE OR USE, FREEDOM FROM BUGS, SOFTWARE ERRORS OR DEFECTS, THAT THE CONTENT'S FUNCTIONING WILL BE UNINTERRUPTED OR THAT THE CONTENT WILL OPERATE WITH ANY SOFTWARE OR HARDWARE CONFIGURATION. In no event shall S&P Parties be liable to any party for any direct, indirect, incidental, exemplary, compensatory, punitive, special or consequential damages, costs, expenses, legal fees, or losses (including, without limitation, lost income or lost profits and opportunity costs or losses caused by negligence) in connection with any use of the Content even if advised of the possibility of such damages.

Credit-related and other analyses, including ratings, and statements in the Content are statements of opinion as of the date they are expressed and not statements of fact. S&P's opinions, analyses and rating acknowledgment decisions (described below) are not recommendations to purchase, hold, or sell any securities or to make any investment decisions, and do not address the suitability of any security. S&P assumes no obligation to update the Content following publication in any form or format. The Content should not be relied on and is not a substitute for the skill, judgment and experience of the user, its management, employees, advisors and/or clients when making investment and other business decisions. S&P does not act as a fiduciary or an investment advisor except where registered as such. While S&P has obtained information from sources it believes to be reliable, S&P does not perform an audit and undertakes no duty of due diligence or independent verification of any information it receives.

To the extent that regulatory authorities allow a rating agency to acknowledge in one jurisdiction a rating issued in another jurisdiction for certain regulatory purposes, S&P reserves the right to assign, withdraw or suspend such acknowledgement at any time and in its sole discretion. S&P Parties disclaim any duty whatsoever arising out of the assignment, withdrawal or suspension of an acknowledgement as well as any liability for any damage alleged to have been suffered on account thereof.

S&P keeps certain activities of its business units separate from each other in order to preserve the independence and objectivity of their respective activities. As a result, certain business units of S&P may have information that is not available to other S&P business units. S&P has established policies and procedures to maintain the confidentiality of certain non-public information received in connection with each analytical process.

S&P may receive compensation for its ratings and certain analyses, normally from issuers or underwriters of securities or from obligors. S&P reserves the right to disseminate its opinions and analyses. S&P's public ratings and analyses are made available on its Web sites, www.standardandpoors.com (free of charge), and www.ratingsdirect.com and www.globalcreditportal.com (subscription), and may be distributed through other means, including via S&P publications and third-party redistributors. Additional information about our ratings fees is available at www.standardandpoors.com/usratingsfees.

S&P GLOBAL RATINGS, S&P, GLOBAL CREDIT PORTAL and RATINGSDIRECT are registered trademarks of Standard & Poor's Financial Services LLC.